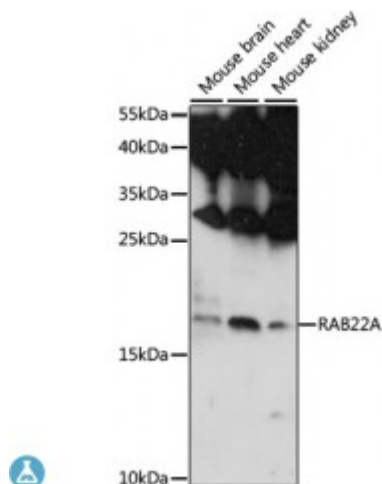


Anti-RAB22A Antibody



Description

The protein encoded by this gene is a member of the RAB family of small GTPases. The GTP-bound form of the encoded protein has been shown to interact with early-endosomal antigen 1, and may be involved in the trafficking of and interaction between endosomal compartments.

Model	STJ117680
Host	Rabbit
Reactivity	Mouse
Applications	WB
Immunogen	A synthetic peptide corresponding to a sequence within amino acids 1-100 of human RAB22A (NP_065724.1).
Gene ID	57403
Gene Symbol	RAB22A
Dilution range	WB 1:200 - 1:2000
Purification	Affinity purification
Note	For Research Use Only (RUO).
Protein Name	Ras-related protein Rab-22A Rab-22
Molecular Weight	21.855 kDa
Clonality	Polyclonal
Conjugation	Unconjugated
Isotype	IgG

Formulation	PBS with 0.02% sodium azide, 50% glycerol, pH7.3.
Storage Instruction	Store at -20C. Avoid freeze / thaw cycles.
Database Links	HGNC:9764OMIM:612966Reactome:R-HSA-8873719
Alternative Names	Ras-related protein Rab-22A Rab-22
Function	Plays a role in endocytosis and intracellular protein transport, Mediates trafficking of TF from early endosomes to recycling endosomes ,
Cellular Localization	Endosome membrane

St John's Laboratory Ltd

F +44 (0)207 681 2580

T +44 (0)208 223 3081

W <http://www.stjohnslabs.com/>

E info@stjohnslabs.com