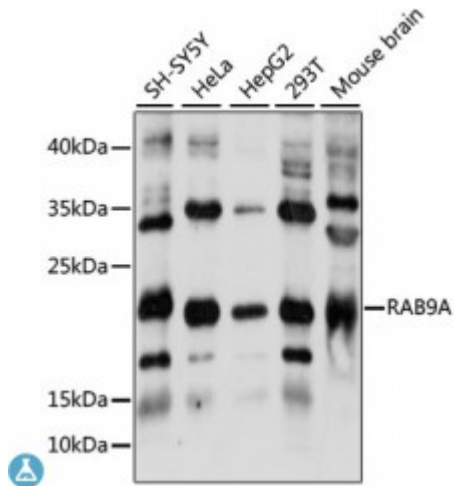


Anti-RAB9A Antibody



Model	STJ117832
Host	Rabbit
Reactivity	Human, Mouse, Rat
Applications	WB
Immunogen	Recombinant fusion protein containing a sequence corresponding to amino acids 1-201 of human RAB9A (NP_004242.1).
Gene ID	9367
Gene Symbol	RAB9A
Dilution range	WB 1:500 - 1:2000
Purification	Affinity purification
Note	For Research Use Only (RUO).
Protein Name	Ras-related protein Rab-9A
Molecular Weight	22.838 kDa
Clonality	Polyclonal
Conjugation	Unconjugated
Isotype	IgG
Formulation	PBS with 0.02% sodium azide, 50% glycerol, pH7.3.
Storage Instruction	Store at -20C. Avoid freeze / thaw cycles.
Database Links	HGNC:9792OMIM:300284Reactome:R-HSA-6811440
Alternative Names	Ras-related protein Rab-9A

Function

Involved in the transport of proteins between the endosomes and the trans Golgi network, Involved in the recruitment of SGSM2 to melanosomes and is required for the proper trafficking of melanogenic enzymes TYR, TYRP1 and DCT/TYRP2 to melanosomes in melanocytes,

Cellular Localization

Cell membrane,

St John's Laboratory Ltd**F** +44 (0)207 681 2580**T** +44 (0)208 223 3081**W** <http://www.stjohnslabs.com/>**E** info@stjohnslabs.com