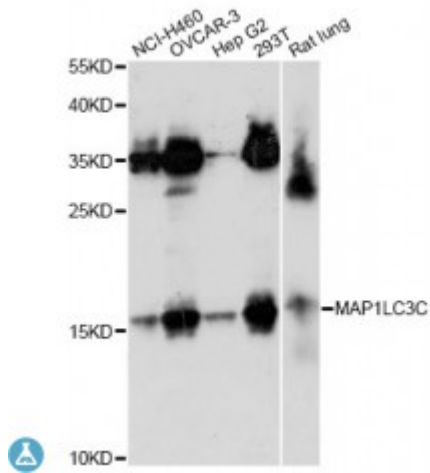


Anti-MAP1LC3C Antibody



Model	STJ117859
Host	Rabbit
Reactivity	Human, Rat
Applications	WB
Immunogen	Recombinant fusion protein containing a sequence corresponding to amino acids 1-147 of human MAP1LC3C (NP_001004343.1).
Gene ID	440738
Gene Symbol	MAP1LC3C
Dilution range	WB 1:500 - 1:2000
Tissue Specificity	Most abundant in placenta, lung and ovary
Purification	Affinity purification
Note	For Research Use Only (RUO).
Protein Name	Microtubule-associated proteins 1A/1B light chain 3C Autophagy-related protein LC3 C Autophagy-related ubiquitin-like modifier LC3 C MAP1 light chain 3-like protein 3 MAP1A/MAP1B light chain 3 C MAP1A/MAP1B LC3 C Microt
Molecular Weight	16.852 kDa
Clonality	Polyclonal
Conjugation	Unconjugated
Isotype	IgG
Formulation	PBS with 0.02% sodium azide, 50% glycerol, pH7.3.

Storage Instruction	Store at -20C. Avoid freeze / thaw cycles.
Database Links	HGNC:13353OMIM:609605Reactome:R-HSA-1632852
Alternative Names	Microtubule-associated proteins 1A/1B light chain 3C Autophagy-related protein LC3 C Autophagy-related ubiquitin-like modifier LC3 C MAP1 light chain 3-like protein 3 MAP1A/MAP1B light chain 3 C MAP1A/MAP1B LC3 C Microt
Function	Ubiquitin-like modifier that plays a crucial role in antibacterial autophagy (xenophagy) through the selective binding of CALCOCO2, Recruits all ATG8 family members to infecting bacteria such as S,Typhimurium ,
Cellular Localization	Cytoplasm, cytoskeleton,
Post-translational Modifications	The precursor molecule is cleaved by ATG4B to form the cytosolic form, LC3-I, This is activated by APG7L/ATG7, transferred to ATG3 and conjugated to phospholipid to form the membrane-bound form, LC3-II ,

St John's Laboratory Ltd

F +44 (0)207 681 2580

T +44 (0)208 223 3081

W <http://www.stjohnslabs.com/>

E info@stjohnslabs.com