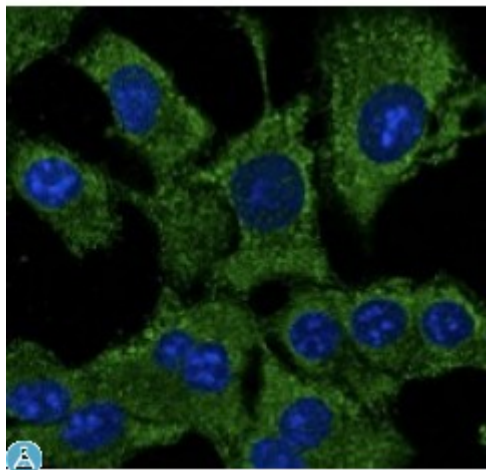


## Anti-ATG12 antibody



### Description

Goat polyclonal antibody to ATG12 - autophagosome marker. Autophagy is a process of bulk protein degradation in which cytoplasmic components, including organelles, are enclosed in double-membrane structures called autophagosomes and delivered to lysosomes or vacuoles for degradation. ATG12 is the human homolog of a yeast protein involved in autophagy.

<b>Model</b>	STJ140014
<b>Host</b>	Goat
<b>Reactivity</b>	Avian, Bovine, Canine, Donkey, Feline, Goat, Guinea Pig, Hamster, Horse, Human, Mouse, Other, Porcine, Rabbit, Rat, Sheep, Simian, Swine
<b>Applications</b>	IF, WB
<b>Immunogen</b>	Purified recombinant peptide within residues 65 aa to the N-terminus of human ATG12 produced in E. coli.
<b>Immunogen Region</b>	N-Term
<b>Gene Symbol</b>	<a href="#">ATG12</a>
<b>Dilution range</b>	Western blot 1:250-1:2,000 Immunofluorescence 1:50-1:250 Immunohistochemistry (paraffin) ND Immunohistochemistry (frozen) ND
<b>Purification</b>	This antibody is epitope-affinity purified from goat antiserum.
<b>Note</b>	For research use only (RUO).
<b>Protein Name</b>	Ubiquitin-like protein ATG12
<b>Clonality</b>	Polyclonal
<b>Conjugation</b>	Unconjugated

<b>Isotype</b>	IgG
<b>Formulation</b>	PBS, 20% glycerol and 0.05% sodium azide.
<b>Concentration</b>	3 mg/mL
<b>Storage Instruction</b>	Store at -20°, and avoid repeated freeze-thaw cycles.
<b>Alternative Names</b>	Ubiquitin-like protein ATG12
<b>Function</b>	Ubiquitin-like protein involved in autophagic vesicle formation. {ECO:0000256 RuleBase:RU361201}.
<b>Sequence and Domain Family</b>	Shares weak sequence similarity with ubiquitin family, but contains an 'ubiquitin superfold' and the C-terminal Gly is required for isopeptide linkage.
<b>Cellular Localization</b>	Cytoplasm .

---

**St John's Laboratory Ltd**

**F** +44 (0)207 681 2580

**T** +44 (0)208 223 3081

**W** <http://www.stjohnslabs.com/>

**E** [info@stjohnslabs.com](mailto:info@stjohnslabs.com)