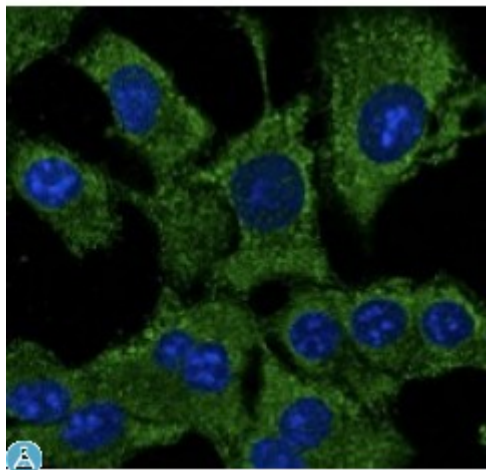


Anti-ATG12 antibody



Description

Goat polyclonal antibody to ATG12 - autophagosome marker. Autophagy is a process of bulk protein degradation in which cytoplasmic components, including organelles, are enclosed in double-membrane structures called autophagosomes and delivered to lysosomes or vacuoles for degradation. ATG12 is the human homolog of a yeast protein involved in autophagy.

Model	STJ140014
Host	Goat
Reactivity	Avian, Bovine, Canine, Donkey, Feline, Goat, Guinea Pig, Hamster, Horse, Human, Mouse, Other, Porcine, Rabbit, Rat, Sheep, Simian, Swine
Applications	IF, WB
Immunogen	Purified recombinant peptide within residues 65 aa to the N-terminus of human ATG12 produced in E. coli.
Immunogen Region	N-Term
Gene Symbol	ATG12
Dilution range	Western blot 1:250-1:2,000 Immunofluorescence 1:50-1:250 Immunohistochemistry (paraffin) ND Immunohistochemistry (frozen) ND
Purification	This antibody is epitope-affinity purified from goat antiserum.
Note	For research use only (RUO).
Protein Name	Ubiquitin-like protein ATG12
Clonality	Polyclonal
Conjugation	Unconjugated

Isotype	IgG
Formulation	PBS, 20% glycerol and 0.05% sodium azide.
Concentration	3 mg/mL
Storage Instruction	Store at -20°, and avoid repeated freeze-thaw cycles.
Alternative Names	Ubiquitin-like protein ATG12
Function	Ubiquitin-like protein involved in autophagic vesicle formation. {ECO:0000256 RuleBase:RU361201}.
Sequence and Domain Family	Shares weak sequence similarity with ubiquitin family, but contains an 'ubiquitin superfold' and the C-terminal Gly is required for isopeptide linkage.
Cellular Localization	Cytoplasm .

St John's Laboratory Ltd

F +44 (0)207 681 2580

T +44 (0)208 223 3081

W <http://www.stjohnslabs.com/>

E info@stjohnslabs.com