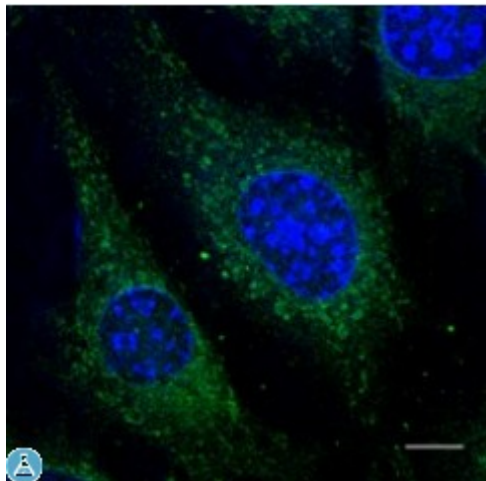


Anti-Rab5 antibody



Description

Goat polyclonal antibody to mouse Rab5. Rab5 belongs to the small GTPase superfamily, Rab family. Rab5a is an Early Endosome Marker and functions as a key regulator of vesicular trafficking during early endocytosis.

Model

STJ140059

Host

Goat

Reactivity

Avian, Bovine, Canine, Donkey, Feline, Goat, Guinea Pig, Hamster, Horse, Human, Mouse, Other, Porcine, Rabbit, Rat, Sheep, Simian

Applications

IF, IHC, WB

Immunogen

Purified recombinant peptides derived from within residues 115 aa to the C-terminus of mouse Rab5a, Rab5b and Rab5c produced in E. coli.

Immunogen Region

C-Term

Gene ID

[5868](#)

Gene Symbol

[RAB5A](#)

Dilution range

Western blot 1:250-1:2,000 Immunofluorescence 1:50-1:250
Immunohistochemistry (paraffin) 1:200-1:1,000 Immunohistochemistry (frozen) 1:200-1:1,000

Specificity

Detects total Rab5 protein in the following human, rat and mouse whole cell lysates and transfected cells with GFP-Rab5a, GFP-Rab5b and GFP-Rab5c cds by Western blot.

Purification

This antibody is epitope-affinity purified from goat antiserum.

Note

For research use only (RUO).

Clonality	Polyclonal
Conjugation	Unconjugated
Isotype	IgG
Formulation	PBS, 20% glycerol and 0.05% sodium azide.
Concentration	3 mg/mL
Storage Instruction	Store at -20°, and avoid repeated freeze-thaw cycles.
Database Links	HGNC:9783OMIM:179512

St John's Laboratory Ltd

F +44 (0)207 681 2580

T +44 (0)208 223 3081

W <http://www.stjohnslabs.com/>

E info@stjohnslabs.com