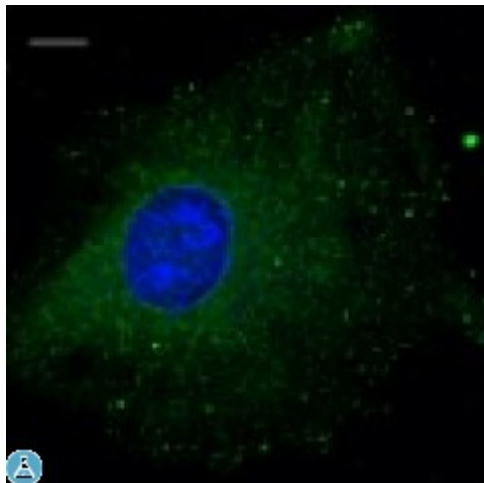


Anti-Rab5b antibody



Description

Goat polyclonal antibody to mouse Rab5b. Rab5b belongs to the small GTPase superfamily, Rab family. Rab5b is an Early Endosome Marker and functions as a key regulator of vesicular trafficking during early endocytosis.

Model	STJ140061
Host	Goat
Reactivity	Avian, Bovine, Canine, Donkey, Feline, Goat, Guinea Pig, Hamster, Horse, Human, Mouse, Other, Porcine, Rabbit, Rat, Sheep, Simian
Applications	IF, WB
Immunogen	Purified recombinant peptide derived from within residues 115 aa to the C-terminus of mouse Rab5b produced in E. coli.
Immunogen Region	C-Term
Gene ID	5869
Gene Symbol	RAB5B
Dilution range	Western blot 1:250-1:1,000 Immunofluorescence 1:50-1:250 Immunohistochemistry (paraffin) ND Immunohistochemistry (frozen) ND
Specificity	Detects Rab5b protein by Western blot in cell lysates of transfected cells with GFP-Rab5b. This Ab is specific for Rab5b; it does not recognize Rab5a and Rab5c.
Purification	This antibody is epitope-affinity purified from goat antiserum.
Note	For research use only (RUO).
Protein Name	Ras-related protein Rab-5B

Molecular Weight	24 kDa
Clonality	Polyclonal
Conjugation	Unconjugated
Isotype	IgG
Formulation	PBS, 20% glycerol and 0.05% sodium azide.
Concentration	4 mg/mL
Storage Instruction	Store at -20°, and avoid repeated freeze-thaw cycles.
Database Links	HGNC:9784OMIM:179514
Alternative Names	Ras-related protein Rab-5B
Function	Protein transport. Probably involved in vesicular traffic .
Cellular Localization	Cell membrane Early endosome membrane Melanosome. Enriched in stage I melanosomes.

St John's Laboratory Ltd

F +44 (0)207 681 2580

T +44 (0)208 223 3081

W <http://www.stjohnslabs.com/>

E info@stjohnslabs.com