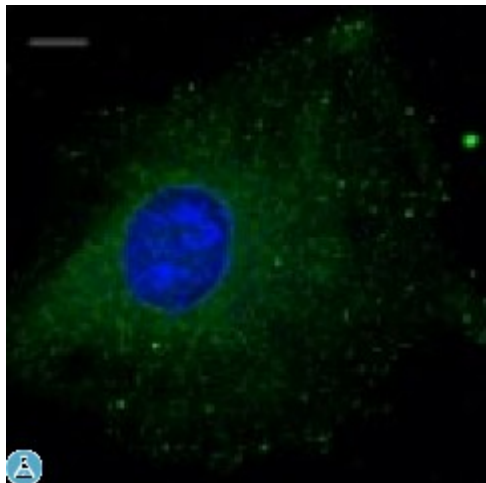


Anti-Rab5b antibody



Description

Goat polyclonal antibody to mouse Rab5b. Rab5b belongs to the small GTPase superfamily, Rab family. Rab5b is an Early Endosome Marker and functions as a key regulator of vesicular trafficking during early endocytosis.

| | |
|-------------------------|--|
| Model | STJ140061 |
| Host | Goat |
| Reactivity | Avian, Bovine, Canine, Donkey, Feline, Goat, Guinea Pig, Hamster, Horse, Human, Mouse, Other, Porcine, Rabbit, Rat, Sheep, Simian |
| Applications | IF, WB |
| Immunogen | Purified recombinant peptide derived from within residues 115 aa to the C-terminus of mouse Rab5b produced in E. coli. |
| Immunogen Region | C-Term |
| Gene ID | 5869 |
| Gene Symbol | RAB5B |
| Dilution range | Western blot 1:250-1:1,000 Immunofluorescence 1:50-1:250 Immunohistochemistry (paraffin) ND Immunohistochemistry (frozen) ND |
| Specificity | Detects Rab5b protein by Western blot in cell lysates of transfected cells with GFP-Rab5b. This Ab is specific for Rab5b; it does not recognize Rab5a and Rab5c. |
| Purification | This antibody is epitope-affinity purified from goat antiserum. |
| Note | For research use only (RUO). |
| Protein Name | Ras-related protein Rab-5B |

| | |
|------------------------------|--|
| Molecular Weight | 24 kDa |
| Clonality | Polyclonal |
| Conjugation | Unconjugated |
| Isotype | IgG |
| Formulation | PBS, 20% glycerol and 0.05% sodium azide. |
| Concentration | 4 mg/mL |
| Storage Instruction | Store at -20°, and avoid repeated freeze-thaw cycles. |
| Database Links | HGNC:9784OMIM:179514 |
| Alternative Names | Ras-related protein Rab-5B |
| Function | Protein transport. Probably involved in vesicular traffic . |
| Cellular Localization | Cell membrane Early endosome membrane Melanosome. Enriched in stage I melanosomes. |

St John's Laboratory Ltd

F +44 (0)207 681 2580

T +44 (0)208 223 3081

W <http://www.stjohnslabs.com/>

E info@stjohnslabs.com