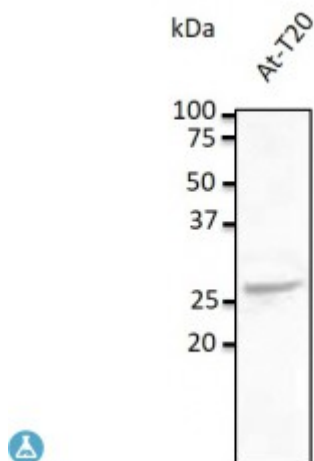


Anti-Rab5c antibody



Description

Goat polyclonal antibody to Rab5c. Rab5c belongs to the small GTPase superfamily, Rab family. Rab5c is an Early Endosome Marker and functions as a key regulator of vesicular trafficking during early endocytosis.

Model	STJ140062
Host	Goat
Reactivity	Avian, Bovine, Canine, Donkey, Feline, Goat, Guinea Pig, Hamster, Horse, Human, Mouse, Other, Porcine, Rabbit, Rat, Sheep, Simian
Applications	WB
Immunogen	Purified recombinant peptide derived from within residues 118 aa to the C-terminus of mouse Rab5c produced in E. coli.
Immunogen Region	C-Term
Gene ID	5878
Gene Symbol	RAB5C
Dilution range	Western blot 1:250-1:2,000 Immunofluorescence ND Immunohistochemistry (paraffin) ND Immunohistochemistry (frozen) ND
Specificity	Detects Rab5c by Western blot in the following human, rat and mouse whole cell lysates and transfected cells with GFP-Rab5c. This antibody is specific for Rab5c. It does not recognize Rab5a and Rab5b proteins.
Purification	This antibody is epitope-affinity purified from goat antiserum.
Note	For research use only (RUO).
Protein Name	Ras-related protein Rab-5C (L1880) (RAB5L)

Molecular Weight	24 kDa
Clonality	Polyclonal
Conjugation	Unconjugated
Isotype	IgG
Formulation	PBS, 20% glycerol and 0.05% sodium azide.
Concentration	4 mg/mL
Storage Instruction	Store at -20°, and avoid repeated freeze-thaw cycles.
Database Links	HGNC:9785OMIM:604037
Alternative Names	Ras-related protein Rab-5C (L1880) (RAB5L)
Function	Protein transport. Probably involved in vesicular traffic .
Cellular Localization	Cell membrane Early endosome membrane Melanosome. Identified by mass spectrometry in melanosome fractions from stage I to stage IV.

St John's Laboratory Ltd

F +44 (0)207 681 2580
T +44 (0)208 223 3081

W <http://www.stjohnslabs.com/>
E info@stjohnslabs.com