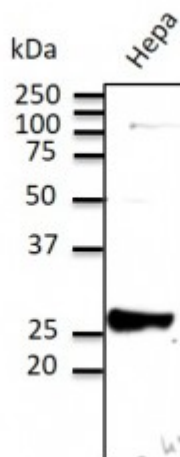


Anti-Rab9 antibody



Description

Goat polyclonal antibody to mouse Rab9. Rab9 belongs to the small GTPase superfamily, Rab family. This protein may be involved in endosome-to-Golgi transport.

Model	STJ140065
Host	Goat
Reactivity	Avian, Bovine, Canine, Donkey, Feline, Goat, Guinea Pig, Hamster, Horse, Human, Mouse, Other, Porcine, Rabbit, Rat, Sheep, Simian
Applications	WB
Immunogen	Purified recombinant peptide derived from within residues 115 aa to the C-terminus of mouse Rab9a and Rab9b produced in E. coli.
Immunogen Region	C-Term
Gene ID	9367
Gene Symbol	RAB9A
Dilution range	Western blot 1:250-1:2,000 Immunofluorescence ND Immunohistochemistry (paraffin) ND Immunohistochemistry (frozen) ND
Specificity	Rab9 antibody detects endogenous levels of total Rab9 protein and transfected cells with GFP-Rab9a and GFP-Rab9b cds.
Purification	This antibody is epitope-affinity purified from goat antiserum.
Note	For research use only (RUO).
Protein Name	Ras-related protein Rab-9A
Molecular Weight	23 kDa

Clonality	Polyclonal
Conjugation	Unconjugated
Isotype	IgG
Formulation	PBS, 20% glycerol and 0.05% sodium azide.
Concentration	3 mg/mL
Storage Instruction	Store at -20°, and avoid repeated freeze-thaw cycles.
Database Links	HGNC:9792OMIM:300284
Alternative Names	Ras-related protein Rab-9A
Function	Involved in the transport of proteins between the endosomes and the trans Golgi network. Involved in the recruitment of SGSM2 to melanosomes and is required for the proper trafficking of melanogenic enzymes TYR, TYRP1 and DCT/TYRP2 to melanosomes in melanocytes.
Cellular Localization	Cell membrane Endoplasmic reticulum membrane Golgi apparatus membrane Late endosome Cytoplasmic vesicle, phagosome membrane Cytoplasmic vesicle, phagosome Cytoplasmic vesicle membrane Melanosome. Colocalizes with OSBPL1A at the late endosome . Recruited to phagosomes containing S.aureus or M.tuberculosis .

St John's Laboratory Ltd

F +44 (0)207 681 2580

T +44 (0)208 223 3081

W <http://www.stjohnslabs.com/>

E info@stjohnslabs.com