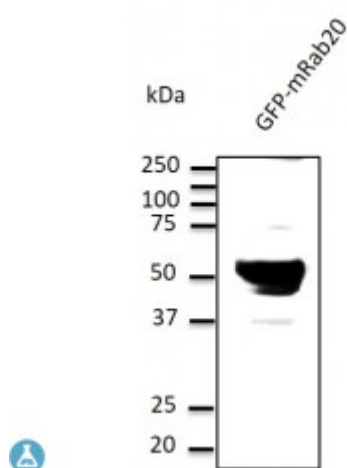


Anti-Rab20 antibody



Description

Goat polyclonal antibody to RAB20. RAB20 belongs to the large RAB family of low molecular weight GTPases that are involved in intracellular membrane trafficking. This protein localizes to Golgi apparatus and plays a role in apical endocytosis/recycling.

Model	STJ140072
Host	Goat
Reactivity	Avian, Bovine, Canine, Donkey, Feline, Goat, Guinea Pig, Hamster, Horse, Human, Mouse, Other, Porcine, Rabbit, Rat, Sheep, Simian
Applications	WB
Immunogen	Purified recombinant peptide derived from within residues 130 aa to the C-terminus of mouse Rab20 produced in E. coli.
Immunogen Region	C-Term
Gene ID	55647
Gene Symbol	RAB20
Dilution range	Western blot 1:250-1:2,000 Immunofluorescence ND Immunohistochemistry (paraffin) ND Immunohistochemistry (frozen) ND
Specificity	Detects Rab20 in transfected cells with GFP-Rab20 by Western blot.
Tissue Specificity	Low or absent expression in normal pancreas and stronger expression in 15 of 18 exocrine pancreatic adenocarcinomas (at protein level).
Purification	This antibody is epitope-affinity purified from goat antiserum.
Note	For research use only (RUO).

Protein Name	Ras-related protein Rab-20
Molecular Weight	27 kDa
Clonality	Polyclonal
Conjugation	Unconjugated
Isotype	IgG
Formulation	PBS, 20% glycerol and 0.05% sodium azide.
Concentration	2 mg/mL
Storage Instruction	Store at -20°, and avoid repeated freeze-thaw cycles.
Database Links	HGNC:18260 OMIM:NA
Alternative Names	Ras-related protein Rab-20
Function	Plays a role in apical endocytosis/recycling. Plays a role in the maturation and acidification of phagosomes that engulf pathogens, such as S.aureus and M.tuberculosis. Plays a role in the fusion of phagosomes with lysosomes.
Cellular Localization	Golgi apparatus Cytoplasmic vesicle, phagosome Cytoplasmic vesicle, phagosome membrane. Highly enriched on apical endocytic structures in polarized epithelial cells of kidney proximal tubules . Recruited to phagosomes containing S.aureus or M.tuberculosis .

St John's Laboratory Ltd

F +44 (0)207 681 2580
T +44 (0)208 223 3081

W <http://www.stjohnslabs.com/>
E info@stjohnslabs.com