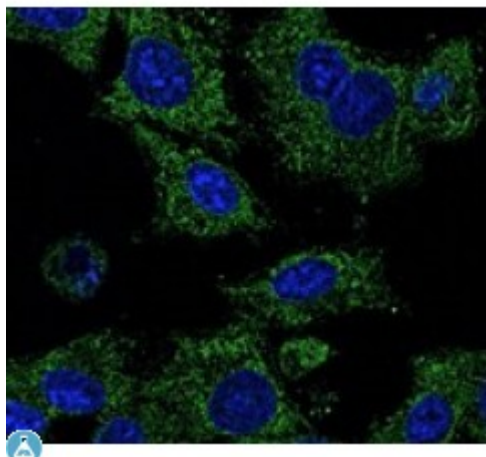


Anti-Rab25 antibody



Description

RAB25 belongs to the large RAB family of low molecular weight GTPases that are involved in intracellular membrane trafficking. Members of the RAB11 subfamily, including RAB25, control the return of internalized membrane-associated moieties to the cell surface.

Model

STJ140073

Host

Goat

Reactivity

Avian, Bovine, Canine, Donkey, Feline, Goat, Guinea Pig, Hamster, Horse, Human, Mouse, Other, Porcine, Rabbit, Rat, Sheep, Simian

Applications

IF, IHC, WB

Immunogen

Purified recombinant peptide derived from within residues 120 aa to the C-terminus of mouse Rab25 produced in E. coli.

Immunogen Region

C-Term

Gene ID

[57111](#)

Gene Symbol

[RAB25](#)

Dilution range

Western blot 1:250-1:2,000 Immunofluorescence 1:25-1:250
Immunohistochemistry (paraffin) 1:200-1:1:1,000 Immunohistochemistry (frozen) 1:200-1:1:1,000

Specificity

Detects Rab25 by Western blot in transfected cells with GFP-Rab25.

Tissue Specificity

Expressed in ovarian epithelium (NOE) and breast tissue. Expressed in ovarian cancer; expression is increased relative to NOE cells. Expression in ovarian cancer is stage dependent, with stage III and stage IV showing higher levels than early stage cancers. Expressed in breast cancer; expression is increased relative to normal breast tissue.

Purification	This antibody is epitope-affinity purified from goat antiserum.
Note	For research use only (RUO).
Protein Name	Ras-related protein Rab-25 (CATX-8)
Molecular Weight	24 kDa
Clonality	Polyclonal
Conjugation	Unconjugated
Isotype	IgG
Formulation	PBS, 20% glycerol and 0.05% sodium azide.
Concentration	2 mg/mL
Storage Instruction	Store at -20°, and avoid repeated freeze-thaw cycles.
Database Links	HGNC:18238 OMIM:612942
Alternative Names	Ras-related protein Rab-25 (CATX-8)
Function	Involved in the regulation of cell survival. Promotes invasive migration of cells in which it functions to localize and maintain integrin alpha-V/beta-1 at the tips of extending pseudopodia . Involved in the regulation of epithelial morphogenesis through the control of CLDN4 expression and localization at tight junctions . May selectively regulate the apical recycling pathway. Together with MYO5B regulates transcytosis .
Cellular Localization	Cell membrane Cell projection, pseudopodium membrane Cytoplasmic vesicle. Colocalizes with integrin alpha-V/beta-1 in vesicles at the pseudopodial tips.