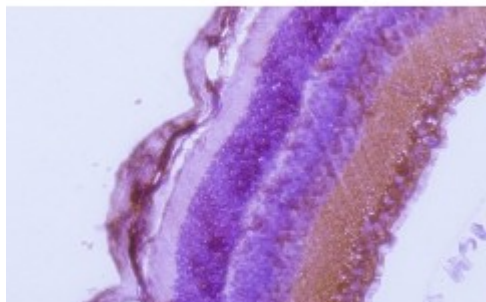


Anti-Rab27a antibody



Description

Goat polyclonal antibody to mouse Rab27a. Rab27a belongs to the small GTPase superfamily, Rab family. The protein is membrane-bound and involved in lysosome-related vesicle transport and small GTPase mediated signal transduction.

Model

STJ140075

Host

Goat

Reactivity

Avian, Bovine, Canine, Donkey, Feline, Goat, Guinea Pig, Hamster, Horse, Human, Mouse, Other, Porcine, Rabbit, Rat, Sheep, Simian

Applications

IF, IHC, WB

Immunogen

Purified recombinant peptide derived from within residues 120 aa to the C-terminus of mouse Rab27a produced in E. coli.

Immunogen Region

C-Term

Gene ID

[5873](#)

Gene Symbol

[RAB27A](#)

Dilution range

Western blot 1:250-1:2,000 Immunofluorescence 1:50-1:200
Immunohistochemistry (paraffin) 1:50-1:400 Immunohistochemistry (frozen)
1:50-1:400

Specificity

Detects Rab27a by Western blot in the following human, rat and mouse whole cell lysates and transfected cells with GFP-Rab27a. This antibody also recognizes Rab27b protein.

Tissue Specificity

Found in all the examined tissues except in brain. Low expression was found in thymus, kidney, muscle and placenta. Detected in melanocytes, and in most tumor cell lines examined. Expressed in cytotoxic T-lymphocytes (CTL) and

mast cells.

Purification	This antibody is epitope-affinity purified from goat antiserum.
Note	For research use only (RUO).
Protein Name	Ras-related protein Rab-27A (Rab-27) (GTP-binding protein Ram)
Molecular Weight	25 kDa
Clonality	Polyclonal
Conjugation	Unconjugated
Isotype	IgG
Formulation	PBS, 20% glycerol and 0.05% sodium azide.
Concentration	3 mg/mL
Storage Instruction	Store at -20°, and avoid repeated freeze-thaw cycles.
Database Links	HGNC:9766OMIM:603868
Alternative Names	Ras-related protein Rab-27A (Rab-27) (GTP-binding protein Ram)
Function	Plays a role in cytotoxic granule exocytosis in lymphocytes. Required for both granule maturation and granule docking and priming at the immunologic synapse.
Cellular Localization	Membrane Melanosome Late endosome Lysosome. Identified by mass spectrometry in melanosome fractions from stage I to stage IV . Localizes to endosomal exocytic vesicles .