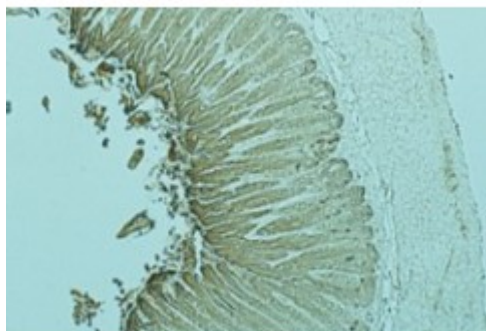


## Anti-Rab27a antibody



### Description

Goat polyclonal antibody to mouse Rab27a. Rab27a belongs to the small GTPase superfamily, Rab family. The protein is membrane-bound and involved in lysosome-related vesicle transport and small GTPase mediated signal transduction.

### Model

STJ140077

### Host

Goat

### Reactivity

Avian, Bovine, Canine, Donkey, Feline, Goat, Guinea Pig, Hamster, Horse, Human, Mouse, Other, Porcine, Rabbit, Rat, Sheep, Simian

### Applications

IF, IHC, WB

### Immunogen

Purified recombinant peptide derived from within residues 120 aa to the C-terminus of mouse Rab27a produced in E. coli.

### Immunogen Region

C-Term

### Gene ID

[5873](#)

### Gene Symbol

[RAB27A](#)

### Dilution range

Western blot 1:250-1:2,000 Immunofluorescence 1:50-1:200  
Immunohistochemistry (paraffin) 1:50-1:400 Immunohistochemistry (frozen)  
1:50-1:400

### Specificity

Detects Rab27a by Western blot in the following human, rat and mouse whole cell lysates and transfected cells with GFP-Rab27a. This antibody is specific for Rab27a. It does not recognize Rab27b protein.

### Tissue Specificity

Found in all the examined tissues except in brain. Low expression was found in thymus, kidney, muscle and placenta. Detected in melanocytes, and in most tumor cell lines examined. Expressed in cytotoxic T-lymphocytes (CTL) and

mast cells.

<b>Purification</b>	This antibody is epitope-affinity purified from goat antiserum.
<b>Note</b>	For research use only (RUO).
<b>Protein Name</b>	Ras-related protein Rab-27A (Rab-27) (GTP-binding protein Ram)
<b>Molecular Weight</b>	25 kDa
<b>Clonality</b>	Polyclonal
<b>Conjugation</b>	Unconjugated
<b>Isotype</b>	IgG
<b>Formulation</b>	PBS, 20% glycerol and 0.05% sodium azide.
<b>Concentration</b>	1 mg/mL
<b>Storage Instruction</b>	Store at -20°, and avoid repeated freeze-thaw cycles.
<b>Database Links</b>	<a href="#">HGNC:9766OMIM:603868</a>
<b>Alternative Names</b>	Ras-related protein Rab-27A (Rab-27) (GTP-binding protein Ram)
<b>Function</b>	Plays a role in cytotoxic granule exocytosis in lymphocytes. Required for both granule maturation and granule docking and priming at the immunologic synapse.
<b>Cellular Localization</b>	Membrane Melanosome Late endosome Lysosome. Identified by mass spectrometry in melanosome fractions from stage I to stage IV . Localizes to endosomal exocytic vesicles .