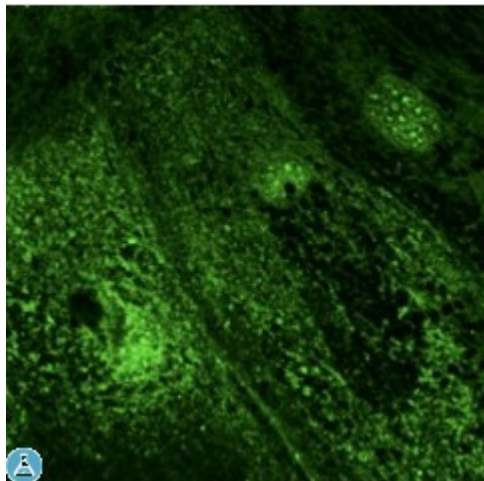


Anti-Rab28 antibody



| | |
|---------------------------|--|
| Description | RAB28 belongs to the large RAB family of low molecular weight GTPases that are involved in intracellular membrane trafficking. |
| Model | STJ140079 |
| Host | Goat |
| Reactivity | Avian, Bovine, Canine, Donkey, Feline, Goat, Guinea Pig, Hamster, Horse, Human, Mouse, Other, Porcine, Rabbit, Rat, Sheep, Simian |
| Applications | IF, WB |
| Immunogen | Purified recombinant peptide derived from within residues 120 aa to the C-terminus of mouse Rab28 produced in E. coli. |
| Immunogen Region | C-Term |
| Gene ID | 9364 |
| Gene Symbol | RAB28 |
| Dilution range | Western blot 1:250-1:2,000 Immunofluorescence 1:25-1:250 Immunohistochemistry (paraffin) ND Immunohistochemistry (frozen) ND |
| Tissue Specificity | Isoform S is detected in most tissues investigated: cortex, liver, kidney, skeletal muscle, adipose tissue, testis, urothelium, lung, bone marrow and retinal pigment epithelium (RPE). Isoform L 2 is widely and abundantly expressed all tissues. Isoform 3 is highly expressed in heart, lung, bone marrow, retina, brain, and RPE. |
| Purification | This antibody is epitope-affinity purified from goat antiserum. |
| Note | For research use only (RUO). |
| Protein Name | Ras-related protein Rab-28 |

| | |
|------------------------------|--|
| Molecular Weight | 25 kDa |
| Clonality | Polyclonal |
| Conjugation | Unconjugated |
| Isotype | IgG |
| Formulation | PBS, 20% glycerol and 0.05% sodium azide. |
| Concentration | 2 mg/mL |
| Storage Instruction | Store at -20°, and avoid repeated freeze-thaw cycles. |
| Database Links | HGNC:9768OMIM:612994 |
| Alternative Names | Ras-related protein Rab-28 |
| Cellular Localization | Cell membrane Cytoplasm, cytoskeleton, cilium basal body. Expressed in the basal body and ciliary rootlet of the photoreceptors. |

St John's Laboratory Ltd

F +44 (0)207 681 2580

T +44 (0)208 223 3081

W <http://www.stjohnslabs.com/>

E info@stjohnslabs.com