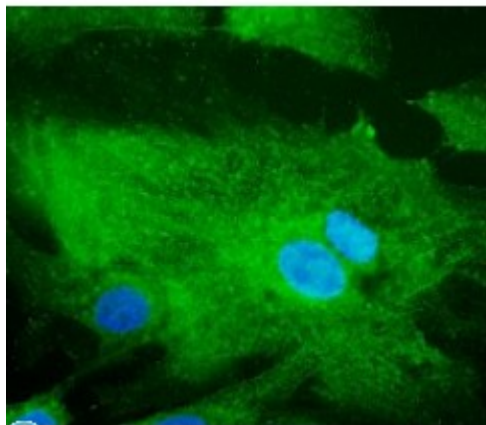


Anti-Rab32 antibody



Description	Goat polyclonal antibody to Rab32. Rab32 belongs to the small GTPase superfamily, Rab family. The protein is membranebound and involved in intracellular vesicle transport and small GTPase mediated signal transduction.
Model	STJ140080
Host	Goat
Reactivity	Avian, Bovine, Canine, Donkey, Feline, Goat, Guinea Pig, Hamster, Horse, Human, Mouse, Other, Porcine, Rabbit, Rat, Sheep, Simian
Applications	IF, WB
Immunogen	Purified recombinant peptide derived from within residues 120 aa to the C-terminus of mouse Rab32 produced in E. coli.
Immunogen Region	C-Term
Gene ID	10981
Gene Symbol	RAB32
Dilution range	Western blot 1:500-1:2,000 Immunofluorescence 1:100-1:500 Immunohistochemistry (paraffin) ND Immunohistochemistry (frozen) ND
Specificity	Detects an endogenous band by Western blot in Melan-ink and 3T3 cell line lysates (approximately 30 kDa) and in transfected cells with GFP-Rab32 cds.
Tissue Specificity	Widely expressed with high levels in heart, liver, kidney, bone marrow, testis, colon and fetal lung.
Purification	This antibody is epitope-affinity purified from goat antiserum.
Note	For research use only (RUO).

Protein Name	Ras-related protein Rab-32
Molecular Weight	25 kDa
Clonality	Polyclonal
Conjugation	Unconjugated
Isotype	IgG
Formulation	PBS, 20% glycerol and 0.05% sodium azide.
Concentration	3 mg/mL
Storage Instruction	Store at -20°, and avoid repeated freeze-thaw cycles.
Database Links	HGNC:9772OMIM:612906
Alternative Names	Ras-related protein Rab-32
Function	Acts as an A-kinase anchoring protein by binding to the type II regulatory subunit of protein kinase A and anchoring it to the mitochondrion. Also involved in synchronization of mitochondrial fission . Plays a role in the maturation of phagosomes that engulf pathogens, such as S.aureus and M.tuberculosis . Plays an important role in the control of melanin production and melanosome biogenesis . In concert with RAB38, regulates the proper trafficking of melanogenic enzymes TYR, TYRP1 and DCT/TYRP2 to melanosomes in melanocytes .
Cellular Localization	Mitochondrion Mitochondrion outer membrane Cytoplasmic vesicle, phagosome Cytoplasmic vesicle, phagosome membrane Melanosome Melanosome membrane. Recruited to phagosomes containing S.aureus or M.tuberculosis . The BLOC-3 complex, a heterodimer of HPS1 and HPS4 promotes its membrane localization .