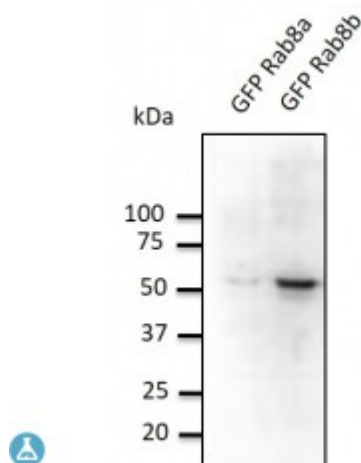


Anti-Rab8b antibody



Description

Goat polyclonal antibody to mouse Rab8. Rab8 belongs to the small GTPase superfamily, Rab family. It has cell-type specific function during the process of exocytosis and coordinates regulation of the cytoskeleton. Rab8 also appears to interface with endocytic recycling circuits. At the molecular level, this GTPase regulates both the export of vesicles from the trans- Golgi apparatus, and the directed translocation along actin filaments and microtubules.

Model	STJ140088
Host	Goat
Reactivity	Avian, Bovine, Canine, Donkey, Feline, Goat, Guinea Pig, Hamster, Horse, Human, Mouse, Other, Porcine, Rabbit, Rat, Sheep, Simian
Applications	WB
Immunogen	Purified recombinant peptide derived from within residues 107 aa to the C-terminus of mouse Rab8b produced in E. coli.
Immunogen Region	C-Term
Gene ID	51762
Gene Symbol	RAB8B
Dilution range	Western blot 1:250-1:1,000 Immunofluorescence ND Immunohistochemistry (paraffin) ND Immunohistochemistry (frozen) ND
Purification	This antibody is epitope-affinity purified from goat antiserum.
Note	For research use only (RUO).
Protein Name	Ras-related protein Rab-8B

Molecular Weight	24 kDa
Clonality	Polyclonal
Conjugation	Unconjugated
Isotype	IgG
Formulation	PBS, 20% glycerol and 0.05% sodium azide.
Concentration	4 mg/mL
Storage Instruction	Store at -20°, and avoid repeated freeze-thaw cycles.
Database Links	HGNC:30273OMIM:613532
Alternative Names	Ras-related protein Rab-8B
Function	The small GTPases Rab are key regulators of intracellular membrane trafficking, from the formation of transport vesicles to their fusion with membranes. Rabs cycle between an inactive GDP-bound form and an active GTP-bound form that is able to recruit to membranes different sets of downstream effectors directly responsible for vesicle formation, movement, tethering and fusion. That Rab may be involved in polarized vesicular trafficking and neurotransmitter release. May participate in cell junction dynamics in Sertoli cells .
Cellular Localization	Cell membrane Cytoplasmic vesicle, phagosome Cytoplasmic vesicle, phagosome membrane. Recruited to phagosomes containing S.aureus or M.tuberculosis.