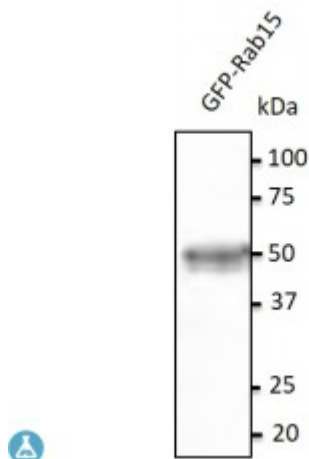


## Anti-Rab15 antibody



### Description

RAB15 belongs to the large RAB family of low molecular weight GTPases that are involved in intracellular membrane trafficking. Rab15 might differentially regulate distinct steps in membrane trafficking through early/sorting and pericentriolar recycling endosomes.

<b>Model</b>	STJ140094
<b>Host</b>	Goat
<b>Reactivity</b>	Avian, Bovine, Canine, Donkey, Feline, Goat, Guinea Pig, Hamster, Horse, Human, Mouse, Other, Porcine, Rabbit, Rat, Sheep, Simian
<b>Applications</b>	WB
<b>Immunogen</b>	Purified recombinant peptide derived from within residues 115 aa to the C-terminus of mouse Rab15 produced in E. coli.
<b>Immunogen Region</b>	C-Term
<b>Gene ID</b>	<a href="#">376267</a>
<b>Gene Symbol</b>	<a href="#">RAB15</a>
<b>Dilution range</b>	Western blot 1:250-1:2,000 Immunofluorescence ND Immunohistochemistry (paraffin) ND Immunohistochemistry (frozen) ND
<b>Specificity</b>	In transfected cells detects Rab15 by Western blot.
<b>Purification</b>	This antibody is epitope-affinity purified from goat antiserum.
<b>Note</b>	For research use only (RUO).
<b>Protein Name</b>	Ras-related protein Rab-15
<b>Molecular Weight</b>	25 kDa

<b>Clonality</b>	Polyclonal
<b>Conjugation</b>	Unconjugated
<b>Isotype</b>	IgG
<b>Formulation</b>	PBS, 20% glycerol and 0.05% sodium azide.
<b>Concentration</b>	3 mg/mL
<b>Storage Instruction</b>	Store at -20°, and avoid repeated freeze-thaw cycles.
<b>Database Links</b>	<a href="#">HGNC:20150</a> OMIM:NA
<b>Alternative Names</b>	Ras-related protein Rab-15
<b>Function</b>	May act in concert with RAB3A in regulating aspects of synaptic vesicle membrane flow within the nerve terminal.
<b>Cellular Localization</b>	Cell membrane

---

**St John's Laboratory Ltd**

**F** +44 (0)207 681 2580

**T** +44 (0)208 223 3081

**W** <http://www.stjohnslabs.com/>

**E** [info@stjohnslabs.com](mailto:info@stjohnslabs.com)