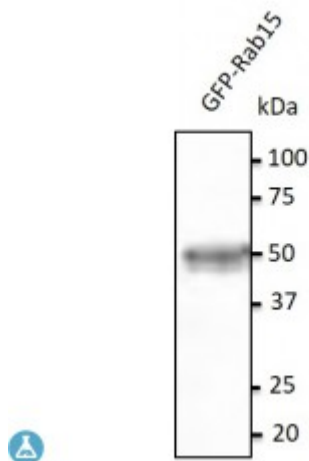


Anti-Rab15 antibody



Description

RAB15 belongs to the large RAB family of low molecular weight GTPases that are involved in intracellular membrane trafficking. Rab15 might differentially regulate distinct steps in membrane trafficking through early/sorting and pericentriolar recycling endosomes.

Model	STJ140094
Host	Goat
Reactivity	Avian, Bovine, Canine, Donkey, Feline, Goat, Guinea Pig, Hamster, Horse, Human, Mouse, Other, Porcine, Rabbit, Rat, Sheep, Simian
Applications	WB
Immunogen	Purified recombinant peptide derived from within residues 115 aa to the C-terminus of mouse Rab15 produced in E. coli.
Immunogen Region	C-Term
Gene ID	376267
Gene Symbol	RAB15
Dilution range	Western blot 1:250-1:2,000 Immunofluorescence ND Immunohistochemistry (paraffin) ND Immunohistochemistry (frozen) ND
Specificity	In transfected cells detects Rab15 by Western blot.
Purification	This antibody is epitope-affinity purified from goat antiserum.
Note	For research use only (RUO).
Protein Name	Ras-related protein Rab-15
Molecular Weight	25 kDa

Clonality	Polyclonal
Conjugation	Unconjugated
Isotype	IgG
Formulation	PBS, 20% glycerol and 0.05% sodium azide.
Concentration	3 mg/mL
Storage Instruction	Store at -20°, and avoid repeated freeze-thaw cycles.
Database Links	HGNC:20150 OMIM:NA
Alternative Names	Ras-related protein Rab-15
Function	May act in concert with RAB3A in regulating aspects of synaptic vesicle membrane flow within the nerve terminal.
Cellular Localization	Cell membrane

St John's Laboratory Ltd

F +44 (0)207 681 2580

T +44 (0)208 223 3081

W <http://www.stjohnslabs.com/>

E info@stjohnslabs.com