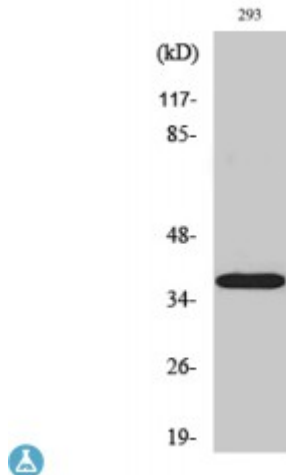


## Anti-1 beta-HSD11 antibody



<b>Description</b>	Rabbit polyclonal to 17beta-HSD11.
<b>Model</b>	STJ91378
<b>Host</b>	Rabbit
<b>Reactivity</b>	Human
<b>Applications</b>	ELISA, WB
<b>Immunogen</b>	Synthesized peptide derived from human 17beta-HSD11
<b>Immunogen Region</b>	40-120 aa, Internal
<b>Gene ID</b>	<a href="#">51170</a>
<b>Gene Symbol</b>	<a href="#">HSD17B11</a>
<b>Dilution range</b>	WB 1:500-1:2000ELISA 1:5000
<b>Specificity</b>	17beta-HSD11 Polyclonal Antibody detects endogenous levels of 17beta-HSD11 protein.
<b>Purification</b>	The antibody was affinity-purified from rabbit antiserum by affinity-chromatography using epitope-specific immunogen.
<b>Note</b>	For Research Use Only (RUO).
<b>Protein Name</b>	Estradiol 17-beta-dehydrogenase 11 17-beta-hydroxysteroid dehydrogenase 11 17-beta-HSD 11 17bHSD11 17betaHSD11 17-beta-hydroxysteroid dehydrogenase XI 17-beta-HSD XI 17betaHSDXI Cutaneous T-cell lymphoma-ass
<b>Molecular Weight</b>	36 kDa

<b>Clonality</b>	Polyclonal
<b>Conjugation</b>	Unconjugated
<b>Isotype</b>	IgG
<b>Formulation</b>	Liquid in PBS containing 50% glycerol, 0.5% BSA and 0.02% sodium azide.
<b>Concentration</b>	1 mg/ml
<b>Storage Instruction</b>	Store at -20°C, and avoid repeat freeze-thaw cycles.
<b>Database Links</b>	<a href="https://www.ncbi.nlm.nih.gov/condensedcode/229600MIM:612831">HGNC:229600MIM:612831</a>
<b>Alternative Names</b>	Estradiol 17-beta-dehydrogenase 11 17-beta-hydroxysteroid dehydrogenase 11 17-beta-HSD 11 17bHSD11 17betaHSD11 17-beta-hydroxysteroid dehydrogenase XI 17-beta-HSD XI 17betaHSDXI Cutaneous T-cell lymphoma-ass

---

**St John's Laboratory Ltd**

**F** +44 (0)207 681 2580

**T** +44 (0)208 223 3081

**W** <http://www.stjohnslabs.com/>

**E** [info@stjohnslabs.com](mailto:info@stjohnslabs.com)