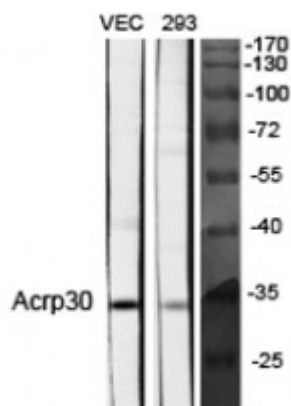


## Anti-Acrp30 antibody



<b>Description</b>	Rabbit polyclonal to Acrp30.
<b>Model</b>	STJ91456
<b>Host</b>	Rabbit
<b>Reactivity</b>	Human, Mouse, Rat
<b>Applications</b>	ELISA, WB
<b>Immunogen</b>	Synthesized peptide derived from human Acrp30.
<b>Immunogen Region</b>	Internal
<b>Gene ID</b>	<a href="#">9370</a>
<b>Gene Symbol</b>	<a href="#">ADIPOQ</a>
<b>Dilution range</b>	WB 1:500-1:2000ELISA 1:10000
<b>Specificity</b>	Acrp30 Polyclonal Antibody detects endogenous levels of Acrp30 protein.
<b>Tissue Specificity</b>	Synthesized exclusively by adipocytes and secreted into plasma.
<b>Purification</b>	The antibody was affinity-purified from rabbit antiserum by affinity-chromatography using epitope-specific immunogen.
<b>Note</b>	For Research Use Only (RUO).
<b>Protein Name</b>	Adiponectin 30 kDa adipocyte complement-related protein Adipocyte complement-related 30 kDa protein ACRP30 Adipocyte, C1q and collagen domain-containing protein Adipose most abundant gene transcript 1 protein apM-1