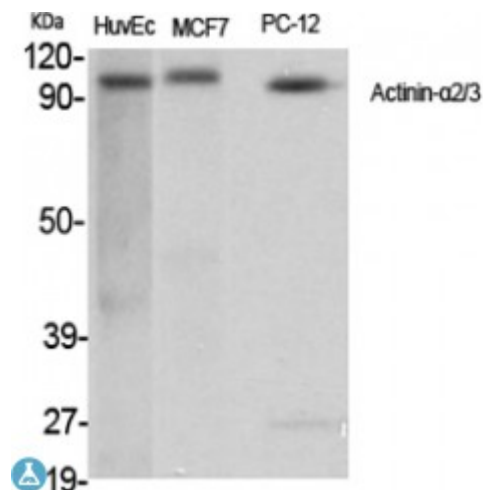


Anti-Actinin-alpha /3 antibody



Description	Rabbit polyclonal to Actinin-alpha2/3.
Model	STJ91467
Host	Rabbit
Reactivity	Human, Mouse, Rat
Applications	ELISA, IF, IHC, WB
Immunogen	Synthesized peptide derived from human Actinin-alpha2/3
Immunogen Region	1-80 aa, N-terminal
Gene ID	88
Gene Symbol	ACTN2
Dilution range	WB 1:500-1:2000IHC 1:100-1:300IF 1:200-1:1000ELISA 1:20000
Specificity	Actinin-alpha2/3 Polyclonal Antibody detects endogenous levels of Actinin-alpha2/3 protein.
Tissue Specificity	Expressed in both skeletal and cardiac muscle.
Purification	The antibody was affinity-purified from rabbit antiserum by affinity-chromatography using epitope-specific immunogen.
Note	For Research Use Only (RUO).
Protein Name	Alpha-actinin-2 Alpha-actinin skeletal muscle isoform 2 F-actin cross-linking protein
Molecular Weight	103 kDa
Clonality	Polyclonal

Conjugation	Unconjugated
Isotype	IgG
Formulation	Liquid in PBS containing 50% glycerol, 0.5% BSA and 0.02% sodium azide.
Concentration	1 mg/ml
Storage Instruction	Store at -20°C, and avoid repeat freeze-thaw cycles.
Database Links	HGNC:164OMIM:102573
Alternative Names	Alpha-actinin-2 Alpha-actinin skeletal muscle isoform 2 F-actin cross-linking protein
Function	F-actin cross-linking protein which is thought to anchor actin to a variety of intracellular structures. This is a bundling protein.
Cellular Localization	Cytoplasm, myofibril, sarcomere, Z line. Colocalizes with MYOZ1 and FLNC at the Z-lines of skeletal muscle.
Post-translational Modifications	Ubiquitinated by FBXL22, leading to proteasomal degradation.

St John's Laboratory Ltd

F +44 (0)207 681 2580
T +44 (0)208 223 3081

W <http://www.stjohnslabs.com/>
E info@stjohnslabs.com