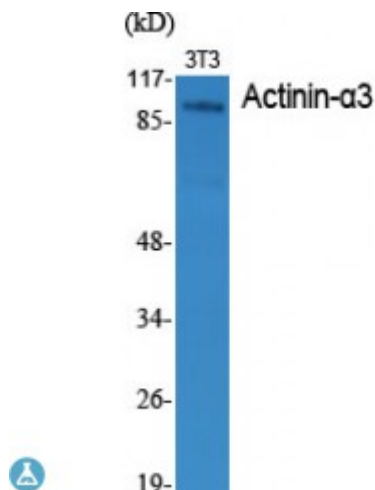


## Anti-Actinin-alpha antibody



<b>Description</b>	Rabbit polyclonal to Actinin-alpha3.
<b>Model</b>	STJ91468
<b>Host</b>	Rabbit
<b>Reactivity</b>	Human, Mouse, Rat
<b>Applications</b>	ELISA, IF, WB
<b>Immunogen</b>	Synthesized peptide derived from human Actinin-alpha3
<b>Immunogen Region</b>	10-90 aa, N-terminal
<b>Gene ID</b>	<a href="#">89</a>
<b>Gene Symbol</b>	<a href="#">ACTN3</a>
<b>Dilution range</b>	WB 1:500-1:2000IF 1:200-1:1000ELISA 1:20000
<b>Specificity</b>	Actinin-alpha3 Polyclonal Antibody detects endogenous levels of Actinin-alpha3 protein.
<b>Tissue Specificity</b>	Expressed only in a subset of type 2 skeletal muscle fibers.
<b>Purification</b>	The antibody was affinity-purified from rabbit antiserum by affinity-chromatography using epitope-specific immunogen.
<b>Note</b>	For Research Use Only (RUO).
<b>Protein Name</b>	Alpha-actinin-3 Alpha-actinin skeletal muscle isoform 3 F-actin cross-linking protein
<b>Molecular Weight</b>	100 kDa
<b>Clonality</b>	Polyclonal

<b>Conjugation</b>	Unconjugated
<b>Isotype</b>	IgG
<b>Formulation</b>	Liquid in PBS containing 50% glycerol, 0.5% BSA and 0.02% sodium azide.
<b>Concentration</b>	1 mg/ml
<b>Storage Instruction</b>	Store at -20°C, and avoid repeat freeze-thaw cycles.
<b>Database Links</b>	<a href="#">HGNC:165OMIM:102574</a>
<b>Alternative Names</b>	Alpha-actinin-3 Alpha-actinin skeletal muscle isoform 3 F-actin cross-linking protein
<b>Function</b>	F-actin cross-linking protein which is thought to anchor actin to a variety of intracellular structures. This is a bundling protein.

---

**St John's Laboratory Ltd**

**F** +44 (0)207 681 2580  
**T** +44 (0)208 223 3081

**W** <http://www.stjohnslabs.com/>  
**E** [info@stjohnslabs.com](mailto:info@stjohnslabs.com)