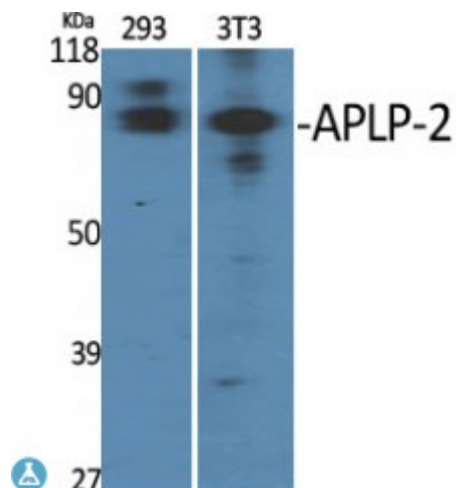


## Anti-APLP-2 antibody



|                           |   |
|---------------------------|---|
| <b>Description</b>        | Rabbit polyclonal to APLP-2.  |
| <b>Model</b>              | STJ91633  |
| <b>Host</b>               | Rabbit  |
| <b>Reactivity</b>         | Human, Mouse, Rat   |
| <b>Applications</b>       | ELISA, IHC, WB  |
| <b>Immunogen</b>          | Synthesized peptide derived from human APLP-2   |
| <b>Immunogen Region</b>   | 210-290 aa, Internal  |
| <b>Gene ID</b>            | <a href="#">334</a>   |
| <b>Gene Symbol</b>        | <a href="#">APLP2</a>   |
| <b>Dilution range</b>     | WB 1:500-1:2000IHC 1:100-1:300ELISA 1:40000   |
| <b>Specificity</b>        | APLP-2 Polyclonal Antibody detects endogenous levels of APLP-2 protein.   |
| <b>Tissue Specificity</b> | Expressed in placenta, brain, heart, lung, liver, kidney and endothelial tissues.                                     |
| <b>Purification</b>       | The antibody was affinity-purified from rabbit antiserum by affinity-chromatography using epitope-specific immunogen. |
| <b>Note</b>               | For Research Use Only (RUO).  |
| <b>Protein Name</b>       | Amyloid-like protein 2 APLP-2 APPH Amyloid protein homolog CDEI box-binding protein CDEBP                             |
| <b>Molecular Weight</b>   | 87 kDa  |
| <b>Clonality</b>          | Polyclonal  |

|   |   |
|---|---|
| <b>Conjugation</b>                      | Unconjugated  |
| <b>Isotype</b>                          | IgG   |
| <b>Formulation</b>                      | Liquid in PBS containing 50% glycerol, 0.5% BSA and 0.02% sodium azide.   |
| <b>Concentration</b>                    | 1 mg/ml   |
| <b>Storage Instruction</b>              | Store at -20°C, and avoid repeat freeze-thaw cycles.  |
| <b>Database Links</b>                   | <a href="#">HGNC:598OMIM:104776</a>   |
| <b>Alternative Names</b>                | Amyloid-like protein 2 APLP-2 APPH Amyloid protein homolog CDEI box-binding protein CDEBP   |
| <b>Function</b>                         | May play a role in the regulation of hemostasis. The soluble form may have inhibitory properties towards coagulation factors. May interact with cellular G-protein signaling pathways. May bind to the DNA 5'-GTCACATG-3'(CDEI box). Inhibits trypsin, chymotrypsin, plasmin, factor XIA and plasma and glandular kallikrein. Modulates the Cu/Zn nitric oxide-catalyzed autodegradation of GPC1 heparan sulfate side chains in fibroblasts . |
| <b>Cellular Localization</b>            | Cell membrane Nucleus   |
| <b>Post-translational Modifications</b> | The BPTI/Kunitz inhibitor domain is O-glycosylated.   |

---

**St John's Laboratory Ltd**

**F** +44 (0)207 681 2580

**T** +44 (0)208 223 3081

**W** <http://www.stjohnslabs.com/>

**E** [info@stjohnslabs.com](mailto:info@stjohnslabs.com)