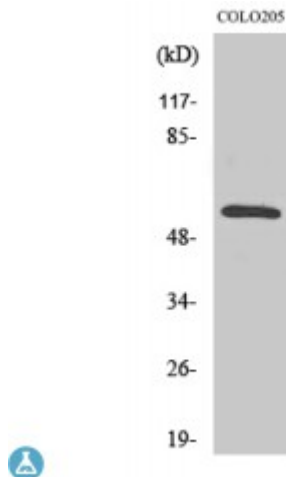


Anti-CaMKI beta/gamma antibody



Description

CaMKI β /gamma is a protein encoded by the CAMK2G gene which is approximately 62,6 kDa. CaMKI β /gamma is localised to the sarcoplasmic reticulum membrane. It is involved in RET signalling, post NMDA receptor activation events, development angiotensin activation of ERK and cardiac conduction. It is a calcium/calmodulin-dependent protein kinase that functions autonomously after Ca²⁺/calmodulin-binding and autophosphorylation. It is also involved in sarcoplasmic reticulum Ca²⁺ transport in skeletal muscle and may function in dendritic spine and synapse formation and neuronal plasticity. CaMKI β /gamma is expressed in skeletal muscle. Mutations in the CAMK2G gene may result in Timothy syndrome and exudative vitreoretinopathy. STJ91990 was affinity-purified from rabbit antiserum by affinity-chromatography using epitope-specific immunogen. This polyclonal antibody detects endogenous levels of CaMKI β /gamma protein.

Model	STJ91990
Host	Rabbit
Reactivity	Human, Mouse, Rat
Applications	ELISA, IF, WB
Immunogen	Synthesized peptide derived from human CaMKI β /gamma
Immunogen Region	480-560 aa, C-terminal
Gene ID	818
Gene Symbol	CAMK2G
Dilution range	WB 1:500-1:2000IF 1:200-1:1000ELISA 1:20000

Specificity	CaMKIIbeta/gamma Polyclonal Antibody detects endogenous levels of CaMKIIbeta/gamma protein.
Purification	The antibody was affinity-purified from rabbit antiserum by affinity-chromatography using epitope-specific immunogen.
Note	For Research Use Only (RUO).
Protein Name	Calcium/calmodulin-dependent protein kinase type II subunit gamma CaM kinase II subunit gamma CaMK-II subunit gamma
Molecular Weight	62 kDa
Clonality	Polyclonal
Conjugation	Unconjugated
Isotype	IgG
Formulation	Liquid in PBS containing 50% glycerol, 0.5% BSA and 0.02% sodium azide.
Concentration	1 mg/ml
Storage Instruction	Store at -20°C, and avoid repeat freeze-thaw cycles.
Database Links	HGNC:1463OMIM:602123
Alternative Names	Calcium/calmodulin-dependent protein kinase type II subunit gamma CaM kinase II subunit gamma CaMK-II subunit gamma