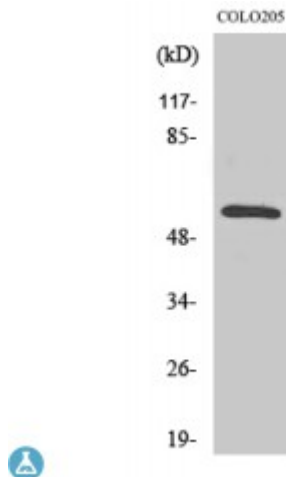


## Anti-CaMKI beta/gamma antibody



### Description

CaMKI $\beta$ /gamma is a protein encoded by the CAMK2G gene which is approximately 62,6 kDa. CaMKI $\beta$ /gamma is localised to the sarcoplasmic reticulum membrane. It is involved in RET signalling, post NMDA receptor activation events, development angiotensin activation of ERK and cardiac conduction. It is a calcium/calmodulin-dependent protein kinase that functions autonomously after Ca<sup>2+</sup>/calmodulin-binding and autophosphorylation. It is also involved in sarcoplasmic reticulum Ca<sup>2+</sup> transport in skeletal muscle and may function in dendritic spine and synapse formation and neuronal plasticity. CaMKI $\beta$ /gamma is expressed in skeletal muscle. Mutations in the CAMK2G gene may result in Timothy syndrome and exudative vitreoretinopathy. STJ91990 was affinity-purified from rabbit antiserum by affinity-chromatography using epitope-specific immunogen. This polyclonal antibody detects endogenous levels of CaMKI $\beta$ /gamma protein.

<b>Model</b>	STJ91990
<b>Host</b>	Rabbit
<b>Reactivity</b>	Human, Mouse, Rat
<b>Applications</b>	ELISA, IF, WB
<b>Immunogen</b>	Synthesized peptide derived from human CaMKI $\beta$ /gamma
<b>Immunogen Region</b>	480-560 aa, C-terminal
<b>Gene ID</b>	<a href="#">818</a>
<b>Gene Symbol</b>	<a href="#">CAMK2G</a>
<b>Dilution range</b>	WB 1:500-1:2000IF 1:200-1:1000ELISA 1:20000

<b>Specificity</b>	CaMKIIbeta/gamma Polyclonal Antibody detects endogenous levels of CaMKIIbeta/gamma protein.
<b>Purification</b>	The antibody was affinity-purified from rabbit antiserum by affinity-chromatography using epitope-specific immunogen.
<b>Note</b>	For Research Use Only (RUO).
<b>Protein Name</b>	Calcium/calmodulin-dependent protein kinase type II subunit gamma CaM kinase II subunit gamma CaMK-II subunit gamma
<b>Molecular Weight</b>	62 kDa
<b>Clonality</b>	Polyclonal
<b>Conjugation</b>	Unconjugated
<b>Isotype</b>	IgG
<b>Formulation</b>	Liquid in PBS containing 50% glycerol, 0.5% BSA and 0.02% sodium azide.
<b>Concentration</b>	1 mg/ml
<b>Storage Instruction</b>	Store at -20°C, and avoid repeat freeze-thaw cycles.
<b>Database Links</b>	<a href="#">HGNC:1463OMIM:602123</a>
<b>Alternative Names</b>	Calcium/calmodulin-dependent protein kinase type II subunit gamma CaM kinase II subunit gamma CaMK-II subunit gamma

---

**St John's Laboratory Ltd**

**F** +44 (0)207 681 2580

**T** +44 (0)208 223 3081

**W** <http://www.stjohnslabs.com/>

**E** [info@stjohnslabs.com](mailto:info@stjohnslabs.com)