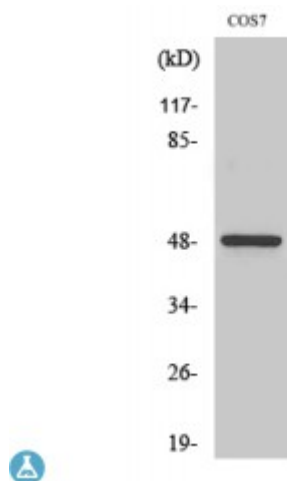


Anti-Casein Kinase gamma antibody



Description	Rabbit polyclonal to Casein Kinase Igamma1.
Model	STJ92012
Host	Rabbit
Reactivity	Human, Mouse, Rat, Simian
Applications	ELISA, IF, IHC, WB
Immunogen	Synthesized peptide derived from human Casein Kinase Igamma1
Immunogen Region	1-80 aa, N-terminal
Gene ID	53944
Gene Symbol	CSNK1G1
Dilution range	WB 1:500-1:2000IHC 1:100-1:300IF 1:200-1:1000ELISA 1:20000
Specificity	Casein Kinase Igamma1 Polyclonal Antibody detects endogenous levels of Casein Kinase Igamma1 protein.
Purification	The antibody was affinity-purified from rabbit antiserum by affinity-chromatography using epitope-specific immunogen.
Note	For Research Use Only (RUO).
Protein Name	Casein kinase I isoform gamma-1 CKI-gamma 1
Molecular Weight	49 kDa
Clonality	Polyclonal
Conjugation	Unconjugated

Isotype	IgG
Formulation	Liquid in PBS containing 50% glycerol, 0.5% BSA and 0.02% sodium azide.
Concentration	1 mg/ml
Storage Instruction	Store at -20°C, and avoid repeat freeze-thaw cycles.
Database Links	HGNC:2454OMIM:606274
Alternative Names	Casein kinase I isoform gamma-1 CKI-gamma 1
Function	Serine/threonine-protein kinase. Casein kinases are operationally defined by their preferential utilization of acidic proteins such as caseins as substrates. It can phosphorylate a large number of proteins. Participates in Wnt signaling. Regulates fast synaptic transmission mediated by glutamate . Phosphorylates CLSPN.
Cellular Localization	Cytoplasm.
Post-translational Modifications	Autophosphorylated.

St John's Laboratory Ltd

F +44 (0)207 681 2580

T +44 (0)208 223 3081

W <http://www.stjohnslabs.com/>

E info@stjohnslabs.com