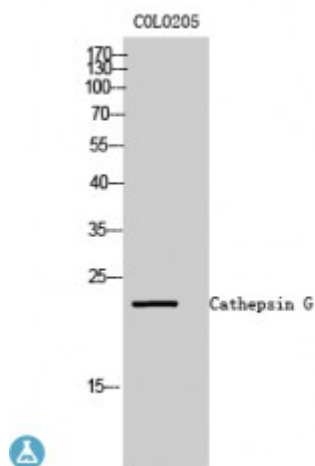


Anti-Cathepsin G antibody



Description	Rabbit polyclonal to Cathepsin G.
Model	STJ92048
Host	Rabbit
Reactivity	Human
Applications	ELISA, WB
Immunogen	Synthesized peptide derived from human Cathepsin- γ G.
Immunogen Region	Internal
Gene ID	1511
Gene Symbol	CTSG
Dilution range	WB 1:500-1:2000ELISA 1:40000
Specificity	Cathepsin- γ G Polyclonal Antibody detects endogenous levels of Cathepsin- γ G protein.
Purification	The antibody was affinity-purified from rabbit antiserum by affinity-chromatography using epitope-specific immunogen.
Note	For Research Use Only (RUO).
Protein Name	Cathepsin G CG
Molecular Weight	22 kDa
Clonality	Polyclonal
Conjugation	Unconjugated

Isotype	IgG
Formulation	Liquid in PBS containing 50% glycerol, 0.5% BSA and 0.02% sodium azide.
Concentration	1 mg/ml
Storage Instruction	Store at -20°C, and avoid repeat freeze-thaw cycles.
Database Links	HGNC:2532OMIM:116830
Alternative Names	Cathepsin G CG
Function	Serine protease with trypsin- and chymotrypsin-like specificity. Cleaves complement C3. Has antibacterial activity against the Gram-negative bacterium P.aeruginosa, antibacterial activity is inhibited by LPS from P.aeruginosa, Z-Gly-Leu-Phe-CH ₂ Cl and phenylmethanesulfonyl fluoride.
Cellular Localization	Cell surface

St John's Laboratory Ltd

F +44 (0)207 681 2580

T +44 (0)208 223 3081

W <http://www.stjohnslabs.com/>

E info@stjohnslabs.com