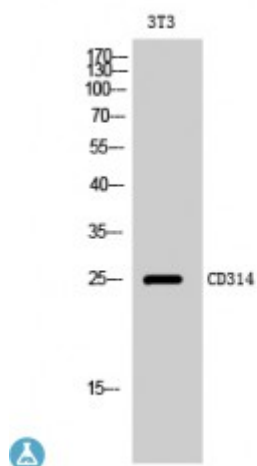


Anti-CD314 antibody



Description	Rabbit polyclonal to CD314.
Model	STJ92118
Host	Rabbit
Reactivity	Human
Applications	ELISA, WB
Immunogen	Synthesized peptide derived from human CD314
Immunogen Region	80-160 aa, Internal
Gene ID	100528032
Gene Symbol	KLRC4
Dilution range	WB 1:500-1:2000ELISA 1:10000
Specificity	CD314 Polyclonal Antibody detects endogenous levels of CD314 protein.
Tissue Specificity	Natural killer cells.
Purification	The antibody was affinity-purified from rabbit antiserum by affinity-chromatography using epitope-specific immunogen.
Note	For Research Use Only (RUO).
Protein Name	NKG2-D type II integral membrane protein Killer cell lectin-like receptor subfamily K member 1 NK cell receptor D NKG2-D-activating NK receptor CD antigen CD314
Molecular Weight	25 kDa
Clonality	Polyclonal

Conjugation	Unconjugated
Isotype	IgG
Formulation	Liquid in PBS containing 50% glycerol, 0.5% BSA and 0.02% sodium azide.
Concentration	1 mg/ml
Storage Instruction	Store at -20°C, and avoid repeat freeze-thaw cycles.
Database Links	HGNC:18788OMIM:611817
Alternative Names	NKG2-D type II integral membrane protein Killer cell lectin-like receptor subfamily K member 1 NK cell receptor D NKG2-D-activating NK receptor CD antigen CD314
Function	May play a role as a receptor for the recognition of MHC class I HLA-E molecules by NK cells.
Cellular Localization	Membrane. Single-pass type II membrane protein.

St John's Laboratory Ltd

F +44 (0)207 681 2580

T +44 (0)208 223 3081

W <http://www.stjohnslabs.com/>

E info@stjohnslabs.com