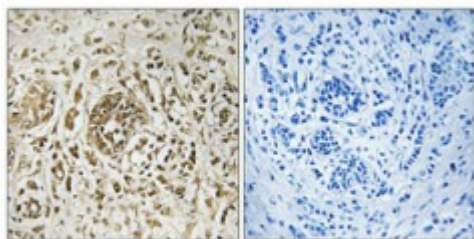


## Anti-CIB2 antibody



<b>Description</b>	Rabbit polyclonal to CIB2.
<b>Model</b>	STJ92290
<b>Host</b>	Rabbit
<b>Reactivity</b>	Human, Mouse, Rat
<b>Applications</b>	ELISA, IHC
<b>Immunogen</b>	Synthesized peptide derived from human CIB2
<b>Immunogen Region</b>	40-120 aa, Internal
<b>Gene ID</b>	<a href="#">10518</a>
<b>Gene Symbol</b>	<a href="#">CIB2</a>
<b>Dilution range</b>	IHC 1:100-1:300ELISA 1:5000
<b>Specificity</b>	CIB2 Polyclonal Antibody detects endogenous levels of CIB2 protein.
<b>Tissue Specificity</b>	Widely expressed .
<b>Purification</b>	The antibody was affinity-purified from rabbit antiserum by affinity-chromatography using epitope-specific immunogen.
<b>Note</b>	For Research Use Only (RUO).
<b>Protein Name</b>	Calcium and integrin-binding family member 2 Kinase-interacting protein 2 KIP 2
<b>Molecular Weight</b>	21.644 kDa
<b>Clonality</b>	Polyclonal

<b>Conjugation</b>	Unconjugated
<b>Isotype</b>	IgG
<b>Formulation</b>	Liquid in PBS containing 50% glycerol, 0.5% BSA and 0.02% sodium azide.
<b>Concentration</b>	1 mg/ml
<b>Storage Instruction</b>	Store at -20°C, and avoid repeat freeze-thaw cycles.
<b>Database Links</b>	<a href="#">HGNC:24579OMIM:605564</a>
<b>Alternative Names</b>	Calcium and integrin-binding family member 2 Kinase-interacting protein 2 KIP 2
<b>Function</b>	Calcium-binding protein critical for proper photoreceptor cell maintenance and function. Plays a role in intracellular calcium homeostasis by decreasing ATP-induced calcium release . May be involved in the mechanotransduction process .
<b>Cellular Localization</b>	Cytoplasm Cell projection, stereocilium Photoreceptor inner segment Cell projection, cilium, photoreceptor outer segment Cell membrane, sarcolemma. Colocalized with ITGA7 at the myotendinous junctions (MTJ) and at the neuromuscular junctions (NMJ) . Localizes in the cuticular plate along and at the tip of the stereocilia of vestibular sensory hair cells .