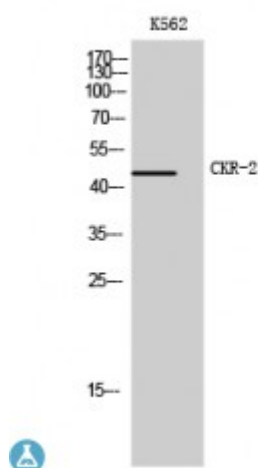


Anti-CKR-2 antibody



Description	Rabbit polyclonal to CKR-2.
Model	STJ92299
Host	Rabbit
Reactivity	Mouse, Rat
Applications	ELISA, IF, WB
Immunogen	Synthesized peptide derived from human CKR-2
Immunogen Region	250-330 aa, C-terminal
Gene ID	12772
Gene Symbol	CCR2
Dilution range	WB 1:500-1:2000IF 1:200-1:1000ELISA 1:5000
Specificity	CKR-2 Polyclonal Antibody detects endogenous levels of CKR-2 protein.
Purification	The antibody was affinity-purified from rabbit antiserum by affinity-chromatography using epitope-specific immunogen.
Note	For Research Use Only (RUO).
Protein Name	C-C chemokine receptor type 2 C-C CKR-2 CC-CKR-2 CCR-2 CCR2 JE/FIC receptor MCP-1 receptor CD antigen CD192
Molecular Weight	46 kDa
Clonality	Polyclonal
Conjugation	Unconjugated

Isotype	IgG
Formulation	Liquid in PBS containing 50% glycerol, 0.5% BSA and 0.02% sodium azide.
Concentration	1 mg/ml
Storage Instruction	Store at -20°C, and avoid repeat freeze-thaw cycles.
Alternative Names	C-C chemokine receptor type 2 C-C CKR-2 CC-CKR-2 CCR-2 CCR2 JE/FIC receptor MCP-1 receptor CD antigen CD192
Function	Receptor for the CCL2, CCL7 and CCL13 chemokines. Transduces a signal by increasing intracellular calcium ion levels. Alternative coreceptor with CD4 for HIV-1 infection.
Cellular Localization	Cell membrane
Post-translational Modifications	N-glycosylated. Sulfation increases the affinity for both monomeric and dimeric CCL2 with stronger binding to the monomeric form. Binding of sulfated CCR2 to CCL2 promotes conversion of CCL2 from dimer to monomer.

St John's Laboratory Ltd

F +44 (0)207 681 2580

T +44 (0)208 223 3081

W <http://www.stjohnslabs.com/>

E info@stjohnslabs.com