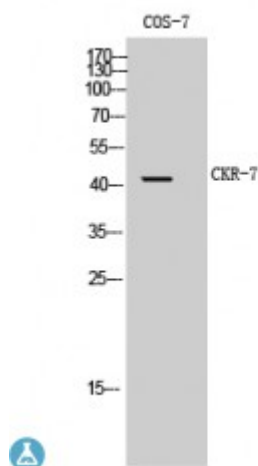


Anti-CKR-7 antibody



Description	Rabbit polyclonal to CKR-7.
Model	STJ92303
Host	Rabbit
Reactivity	Human, Simian
Applications	ELISA, IF, WB
Immunogen	Synthesized peptide derived from human CKR-7
Immunogen Region	140-220 aa, Internal
Gene ID	1236
Gene Symbol	CCR7
Dilution range	WB 1:500-1:2000IF 1:200-1:1000ELISA 1:40000
Specificity	CKR-7 Polyclonal Antibody detects endogenous levels of CKR-7 protein.
Tissue Specificity	Expressed in various lymphoid tissues and activated B- and T-lymphocytes, strongly up-regulated in B-cells infected with Epstein-Barr virus and T-cells infected with herpesvirus 6 or 7.
Purification	The antibody was affinity-purified from rabbit antiserum by affinity-chromatography using epitope-specific immunogen.
Note	For Research Use Only (RUO).
Protein Name	C-C chemokine receptor type 7 C-C CKR-7 CC-CKR-7 CCR-7 BLR2 CDw197 Epstein-Barr virus-induced G-protein coupled receptor 1 EB11 EBV-induced G-protein coupled receptor 1 MIP-3 beta receptor CD ant

Molecular Weight	43 kDa
Clonality	Polyclonal
Conjugation	Unconjugated
Isotype	IgG
Formulation	Liquid in PBS containing 50% glycerol, 0.5% BSA and 0.02% sodium azide.
Concentration	1 mg/ml
Storage Instruction	Store at -20°C, and avoid repeat freeze-thaw cycles.
Database Links	HGNC:1608OMIM:600242
Alternative Names	C-C chemokine receptor type 7 C-C CKR-7 CC-CKR-7 CCR-7 BLR2 CDw197 Epstein-Barr virus-induced G-protein coupled receptor 1 EBI1 EBV- induced G-protein coupled receptor 1 MIP-3 beta receptor CD ant
Function	Receptor for the MIP-3-beta chemokine. Probable mediator of EBV effects on B-lymphocytes or of normal lymphocyte functions.
Cellular Localization	Cell membrane. Multi-pass membrane protein.

St John's Laboratory Ltd

F +44 (0)207 681 2580

T +44 (0)208 223 3081

W <http://www.stjohnslabs.com/>

E info@stjohnslabs.com