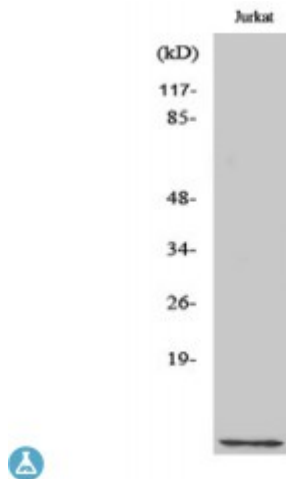


Anti-Cks1 antibody



Description	Rabbit polyclonal to Cks1.
Model	STJ92304
Host	Rabbit
Reactivity	Human, Mouse
Applications	ELISA, IF, WB
Immunogen	Synthesized peptide derived from human Cks1
Immunogen Region	65-79 aa, C-terminal
Gene ID	1163
Gene Symbol	CKS1B
Dilution range	WB 1:500-1:2000IF 1:200-1:1000ELISA 1:20000
Specificity	Cks1 Polyclonal Antibody detects endogenous levels of Cks1 protein.
Purification	The antibody was affinity-purified from rabbit antiserum by affinity-chromatography using epitope-specific immunogen.
Note	For Research Use Only (RUO).
Protein Name	Cyclin-dependent kinases regulatory subunit 1 CKS-1
Molecular Weight	9 kDa
Clonality	Polyclonal
Conjugation	Unconjugated
Isotype	IgG

Formulation	Liquid in PBS containing 50% glycerol, 0.5% BSA and 0.02% sodium azide.
Concentration	1 mg/ml
Storage Instruction	Store at -20°C, and avoid repeat freeze-thaw cycles.
Database Links	HGNC:19083OMIM:116900
Alternative Names	Cyclin-dependent kinases regulatory subunit 1 CKS-1
Function	Binds to the catalytic subunit of the cyclin dependent kinases and is essential for their biological function.

St John's Laboratory Ltd

F +44 (0)207 681 2580

T +44 (0)208 223 3081

W <http://www.stjohnslabs.com/>

E info@stjohnslabs.com