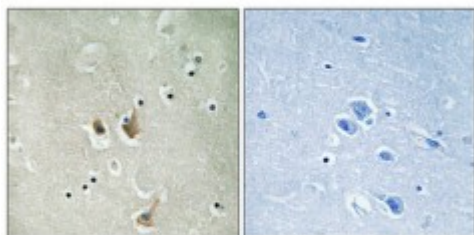


## Anti-Cks2 antibody



<b>Description</b>	Rabbit polyclonal to Cks2.
<b>Model</b>	STJ92305
<b>Host</b>	Rabbit
<b>Reactivity</b>	Human, Mouse
<b>Applications</b>	ELISA, IHC
<b>Immunogen</b>	Synthesized peptide derived from human Cks2
<b>Immunogen Region</b>	10-90 aa, N-terminal
<b>Gene ID</b>	<a href="#">1164</a>
<b>Gene Symbol</b>	<a href="#">CKS2</a>
<b>Dilution range</b>	IHC 1:100-1:300ELISA 1:20000
<b>Specificity</b>	Cks2 Polyclonal Antibody detects endogenous levels of Cks2 protein.
<b>Purification</b>	The antibody was affinity-purified from rabbit antiserum by affinity-chromatography using epitope-specific immunogen.
<b>Note</b>	For Research Use Only (RUO).
<b>Protein Name</b>	Cyclin-dependent kinases regulatory subunit 2 CKS-2
<b>Molecular Weight</b>	9.86 kDa
<b>Clonality</b>	Polyclonal
<b>Conjugation</b>	Unconjugated
<b>Isotype</b>	IgG

<b>Formulation</b>	Liquid in PBS containing 50% glycerol, 0.5% BSA and 0.02% sodium azide.
<b>Concentration</b>	1 mg/ml
<b>Storage Instruction</b>	Store at -20°C, and avoid repeat freeze-thaw cycles.
<b>Database Links</b>	<a href="#">HGNC:20000MIM:116901</a>
<b>Alternative Names</b>	Cyclin-dependent kinases regulatory subunit 2 CKS-2
<b>Function</b>	Binds to the catalytic subunit of the cyclin dependent kinases and is essential for their biological function.

---

**St John's Laboratory Ltd**

**F** +44 (0)207 681 2580

**T** +44 (0)208 223 3081

**W** <http://www.stjohnslabs.com/>

**E** [info@stjohnslabs.com](mailto:info@stjohnslabs.com)