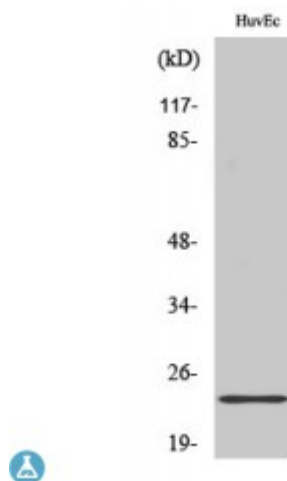


Anti-Claudin-3 antibody



Description	Rabbit polyclonal to Claudin-3.
Model	STJ92314
Host	Rabbit
Reactivity	Human, Mouse, Rat
Applications	ELISA, IF, IHC, WB
Immunogen	Synthesized peptide derived from human Claudin-3
Immunogen Region	140-220 aa, C-terminal
Gene ID	1365
Gene Symbol	CLDN3
Dilution range	WB 1:500-1:2000IHC 1:100-1:300IF 1:200-1:1000ELISA 1:40000
Specificity	Claudin-3 Polyclonal Antibody detects endogenous levels of Claudin-3 protein.
Purification	The antibody was affinity-purified from rabbit antiserum by affinity-chromatography using epitope-specific immunogen.
Note	For Research Use Only (RUO).
Protein Name	Claudin-3 Clostridium perfringens enterotoxin receptor 2 CPE-R 2 CPE-receptor 2 Rat ventral prostate.1 protein homolog hRVP1
Molecular Weight	25 kDa
Clonality	Polyclonal
Conjugation	Unconjugated

Isotype	IgG
Formulation	Liquid in PBS containing 50% glycerol, 0.5% BSA and 0.02% sodium azide.
Concentration	1 mg/ml
Storage Instruction	Store at -20°C, and avoid repeat freeze-thaw cycles.
Database Links	HGNC:2045OMIM:602910
Alternative Names	Claudin-3 Clostridium perfringens enterotoxin receptor 2 CPE-R 2 CPE-receptor 2 Rat ventral prostate.1 protein homolog hRVP1
Function	Plays a major role in tight junction-specific obliteration of the intercellular space, through calcium-independent cell-adhesion activity.
Cellular Localization	Cell junction, tight junction Cell membrane

St John's Laboratory Ltd

F +44 (0)207 681 2580

T +44 (0)208 223 3081

W <http://www.stjohnslabs.com/>

E info@stjohnslabs.com