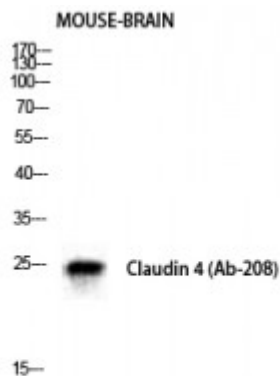


Anti-Claudin-4 antibody



| | |
|-------------------------|---|
| Description | Rabbit polyclonal to Claudin-4. |
| Model | STJ92315 |
| Host | Rabbit |
| Reactivity | Human |
| Applications | ELISA, IHC, WB |
| Immunogen | Synthesized peptide derived from human Claudin-4 around the non-phosphorylation site of Y208. |
| Immunogen Region | 130-210 aa |
| Gene ID | 1364 |
| Gene Symbol | CLDN4 |
| Dilution range | WB 1:500-1:2000IHC 1:100-1:300ELISA 1:5000 |
| Specificity | Claudin-4 Polyclonal Antibody detects endogenous levels of Claudin-4 protein. |
| Purification | The antibody was affinity-purified from rabbit antiserum by affinity-chromatography using epitope-specific immunogen. |
| Note | For Research Use Only (RUO). |
| Protein Name | Claudin-4 Clostridium perfringens enterotoxin receptor CPE-R CPE-receptor Williams-Beuren syndrome chromosomal region 8 protein |
| Molecular Weight | 28 kDa |
| Clonality | Polyclonal |

| | |
|---|--|
| Conjugation | Unconjugated |
| Isotype | IgG |
| Formulation | Liquid in PBS containing 50% glycerol, 0.5% BSA and 0.02% sodium azide. |
| Concentration | 1 mg/ml |
| Storage Instruction | Store at -20°C, and avoid repeat freeze-thaw cycles. |
| Database Links | HGNC:2046OMIM:602909 |
| Alternative Names | Claudin-4 Clostridium perfringens enterotoxin receptor CPE-R CPE-receptor Williams-Beuren syndrome chromosomal region 8 protein |
| Function | Plays a major role in tight junction-specific obliteration of the intercellular space. |
| Cellular Localization | Cell junction, tight junction Cell membrane |
| Post-translational Modifications | Phosphorylated. Phosphorylation by EPHA2 is stimulated by EFNA1 and alters interaction with TJP1. |

St John's Laboratory Ltd

F +44 (0)207 681 2580

T +44 (0)208 223 3081

W <http://www.stjohnslabs.com/>

E info@stjohnslabs.com