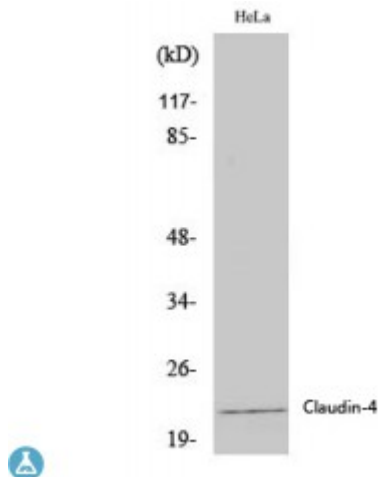


## Anti-Claudin-4 antibody



|                         |   |
|-------------------------|---|
| <b>Description</b>      | Rabbit polyclonal to Claudin-4.   |
| <b>Model</b>            | STJ92316  |
| <b>Host</b>             | Rabbit  |
| <b>Reactivity</b>       | Human, Mouse, Rat   |
| <b>Applications</b>     | ELISA, IF, IHC, WB  |
| <b>Immunogen</b>        | Synthesized peptide derived from human Claudin-4  |
| <b>Immunogen Region</b> | 130-210 aa, C-terminal  |
| <b>Gene ID</b>          | <a href="#">1364</a>  |
| <b>Gene Symbol</b>      | <a href="#">CLDN4</a>   |
| <b>Dilution range</b>   | WB 1:500-1:2000IHC 1:100-1:300IF 1:200-1:1000ELISA 1:5000   |
| <b>Specificity</b>      | Claudin-4 Polyclonal Antibody detects endogenous levels of Claudin-4 protein.   |
| <b>Purification</b>     | The antibody was affinity-purified from rabbit antiserum by affinity-chromatography using epitope-specific immunogen.           |
| <b>Note</b>             | For Research Use Only (RUO).  |
| <b>Protein Name</b>     | Claudin-4 Clostridium perfringens enterotoxin receptor CPE-R CPE-receptor Williams-Beuren syndrome chromosomal region 8 protein |
| <b>Molecular Weight</b> | 22 kDa  |
| <b>Clonality</b>        | Polyclonal  |
| <b>Conjugation</b>      | Unconjugated  |

|   |   |
|---|---|
| <b>Isotype</b>                          | IgG   |
| <b>Formulation</b>                      | Liquid in PBS containing 50% glycerol, 0.5% BSA and 0.02% sodium azide.   |
| <b>Concentration</b>                    | 1 mg/ml   |
| <b>Storage Instruction</b>              | Store at -20°C, and avoid repeat freeze-thaw cycles.  |
| <b>Database Links</b>                   | <a href="https://www.ncbi.nlm.nih.gov/condensedset/condensedset.cgi?acc=HGNC:2046OMIM:602909">HGNC:2046OMIM:602909</a>          |
| <b>Alternative Names</b>                | Claudin-4 Clostridium perfringens enterotoxin receptor CPE-R CPE-receptor Williams-Beuren syndrome chromosomal region 8 protein |
| <b>Function</b>                         | Plays a major role in tight junction-specific obliteration of the intercellular space.  |
| <b>Cellular Localization</b>            | Cell junction, tight junction Cell membrane   |
| <b>Post-translational Modifications</b> | Phosphorylated. Phosphorylation by EPHA2 is stimulated by EFNA1 and alters interaction with TJP1.                               |

---

**St John's Laboratory Ltd**

**F** +44 (0)207 681 2580

**T** +44 (0)208 223 3081

**W** <http://www.stjohnslabs.com/>

**E** [info@stjohnslabs.com](mailto:info@stjohnslabs.com)