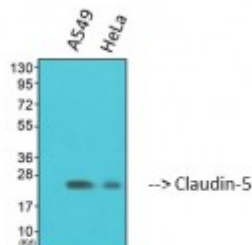


Anti-Claudin-5 antibody



Western Blot (WB) analysis of 1. A549 2. HeLa using Claudin-5 Polyclonal Antibody. (STJ92318)



Description

Claudin-5 is a protein encoded by the CLDN5 gene which is approximately 23,1 kDa. Claudin-5 is localised to the cell membrane. It is involved in cell junction organization, blood-brain barrier and immune cell transmigration and Sertoli-Sertoli cell junction dynamics. It is an integral membrane protein and component of tight junction strands and serves as a physical barrier to prevent solutes and water from passing freely through the paracellular space between epithelial or endothelial cell sheets. Claudin-5 is expressed in the nervous system, lung, heart, blood and eye. Mutations in the CLDN5 gene may result in Gray platelet syndrome and Velocardiofacial syndrome. STJ92318 was affinity-purified from rabbit antiserum by affinity-chromatography using epitope-specific immunogen. This polyclonal antibody detects endogenous levels of claudin-5 protein.

Model	STJ92318
Host	Rabbit
Reactivity	Human, Mouse, Rat
Applications	ELISA, IF, IHC, WB
Immunogen	Synthesized peptide derived from human Claudin-5
Immunogen Region	140-220 aa, C-terminal
Gene ID	7122
Gene Symbol	CLDN5
Dilution range	WB 1:500-1:2000IHC 1:100-1:300IF 1:200-1:1000ELISA 1:40000
Specificity	Claudin-5 Polyclonal Antibody detects endogenous levels of Claudin-5 protein.

Purification	The antibody was affinity-purified from rabbit antiserum by affinity-chromatography using epitope-specific immunogen.
Note	For Research Use Only (RUO).
Protein Name	Claudin-5 Transmembrane protein deleted in VCFS TMDVCF
Molecular Weight	23 kDa
Clonality	Polyclonal
Conjugation	Unconjugated
Isotype	IgG
Formulation	Liquid in PBS containing 50% glycerol, 0.5% BSA and 0.02% sodium azide.
Concentration	1 mg/ml
Storage Instruction	Store at -20°C, and avoid repeat freeze-thaw cycles.
Database Links	HGNC:2047OMIM:602101
Alternative Names	Claudin-5 Transmembrane protein deleted in VCFS TMDVCF
Function	Plays a major role in tight junction-specific obliteration of the intercellular space.
Cellular Localization	Cell junction, tight junction. Cell membrane. Multi-pass membrane protein.

St John's Laboratory Ltd

F +44 (0)207 681 2580

T +44 (0)208 223 3081

W <http://www.stjohnslabs.com/>

E info@stjohnslabs.com