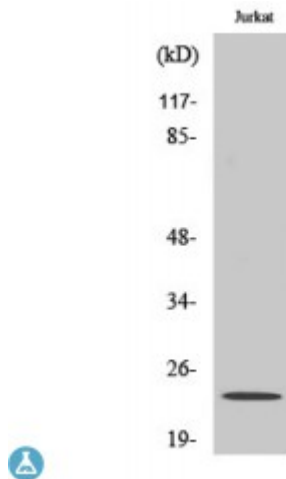


Anti-Claudin-6 antibody



Description	Rabbit polyclonal to Claudin-6.
Model	STJ92320
Host	Rabbit
Reactivity	Human
Applications	ELISA, IF, IHC, WB
Immunogen	Synthesized peptide derived from human Claudin-6
Immunogen Region	50-130 aa, Internal
Gene ID	9074
Gene Symbol	CLDN6
Dilution range	WB 1:500-1:2000IHC 1:100-1:300IF 1:200-1:1000ELISA 1:40000
Specificity	Claudin-6 Polyclonal Antibody detects endogenous levels of Claudin-6 protein.
Tissue Specificity	Expressed in the liver, in peripheral blood mononuclear cells and hepatocarcinoma cell lines.
Purification	The antibody was affinity-purified from rabbit antiserum by affinity-chromatography using epitope-specific immunogen.
Note	For Research Use Only (RUO).
Protein Name	Claudin-6 Skullin
Molecular Weight	26 kDa
Clonality	Polyclonal

Conjugation	Unconjugated
Isotype	IgG
Formulation	Liquid in PBS containing 50% glycerol, 0.5% BSA and 0.02% sodium azide.
Concentration	1 mg/ml
Storage Instruction	Store at -20°C, and avoid repeat freeze-thaw cycles.
Database Links	HGNC:2048OMIM:615798
Alternative Names	Claudin-6 Skullin
Function	Plays a major role in tight junction-specific obliteration of the intercellular space. (Microbial infection) Acts as a receptor for hepatitis C virus (HCV) entry into hepatic cells.
Cellular Localization	Cell junction, tight junction Cell membrane

St John's Laboratory Ltd

F +44 (0)207 681 2580

T +44 (0)208 223 3081

W <http://www.stjohnslabs.com/>

E info@stjohnslabs.com