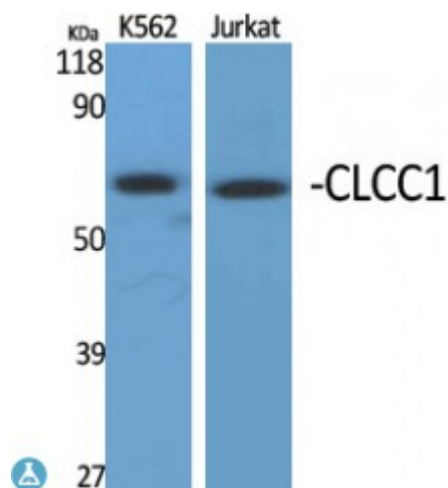


Anti-CLCC1 antibody



Description	Rabbit polyclonal to CLCC1.
Model	STJ92327
Host	Rabbit
Reactivity	Human
Applications	ELISA, IF, WB
Immunogen	Synthesized peptide derived from human CLCC1
Immunogen Region	360-440 aa, Internal
Gene ID	23155
Gene Symbol	CLCC1
Dilution range	WB 1:500-1:2000IF 1:200-1:1000ELISA 1:40000
Specificity	CLCC1 Polyclonal Antibody detects endogenous levels of CLCC1 protein.
Purification	The antibody was affinity-purified from rabbit antiserum by affinity-chromatography using epitope-specific immunogen.
Note	For Research Use Only (RUO).
Protein Name	Chloride channel CLIC-like protein 1 Mid-1-related chloride channel protein 1
Molecular Weight	62 kDa
Clonality	Polyclonal
Conjugation	Unconjugated

Isotype	IgG
Formulation	Liquid in PBS containing 50% glycerol, 0.5% BSA and 0.02% sodium azide.
Concentration	1 mg/ml
Storage Instruction	Store at -20°C, and avoid repeat freeze-thaw cycles.
Database Links	HGNC:29675OMIM:617539
Alternative Names	Chloride channel CLIC-like protein 1 Mid-1-related chloride channel protein 1
Function	Seems to act as a chloride ion channel.
Cellular Localization	Membrane Endoplasmic reticulum. Golgi apparatus. Nucleus

St John's Laboratory Ltd

F +44 (0)207 681 2580
T +44 (0)208 223 3081

W <http://www.stjohnslabs.com/>
E info@stjohnslabs.com