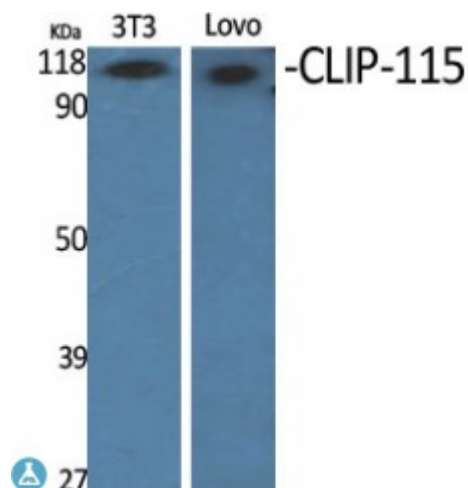


Anti-CLIP-115 antibody



Description	Rabbit polyclonal to CLIP-115.
Model	STJ92332
Host	Rabbit
Reactivity	Human, Mouse, Rat
Applications	ELISA, WB
Immunogen	Synthesized peptide derived from human CLIP-115
Immunogen Region	960-1040 aa, C-terminal
Gene ID	7461
Gene Symbol	CLIP2
Dilution range	WB 1:500-1:2000ELISA 1:5000
Specificity	CLIP-115 Polyclonal Antibody detects endogenous levels of CLIP-115 protein.
Purification	The antibody was affinity-purified from rabbit antiserum by affinity-chromatography using epitope-specific immunogen.
Note	For Research Use Only (RUO).
Protein Name	CAP-Gly domain-containing linker protein 2 Cytoplasmic linker protein 115 CLIP-115 Cytoplasmic linker protein 2 Williams-Beuren syndrome chromosomal region 3 protein Williams-Beuren syndrome chromosomal region 4 protein
Molecular Weight	120 kDa

Clonality	Polyclonal
Conjugation	Unconjugated
Isotype	IgG
Formulation	Liquid in PBS containing 50% glycerol, 0.5% BSA and 0.02% sodium azide.
Concentration	1 mg/ml
Storage Instruction	Store at -20°C, and avoid repeat freeze-thaw cycles.
Database Links	HGNC:2586OMIM:603432
Alternative Names	CAP-Gly domain-containing linker protein 2 Cytoplasmic linker protein 115 CLIP-115 Cytoplasmic linker protein 2 Williams-Beuren syndrome chromosomal region 3 protein Williams-Beuren syndrome chromosomal region 4 protein
Function	Seems to link microtubules to dendritic lamellar body (DLB), a membranous organelle predominantly present in bulbous dendritic appendages of neurons linked by dendrodendritic gap junctions. May operate in the control of brain- specific organelle translocations .
Cellular Localization	Cytoplasm Cytoplasm, cytoskeleton. Localizes preferentially to the ends of tyrosinated microtubules.

St John's Laboratory Ltd

F +44 (0)207 681 2580

T +44 (0)208 223 3081

W <http://www.stjohnslabs.com/>

E info@stjohnslabs.com