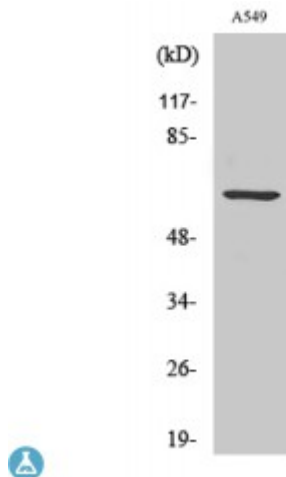


Anti-CLIP3 antibody



Description	Rabbit polyclonal to CLIP3.
Model	STJ92334
Host	Rabbit
Reactivity	Human, Mouse, Rat
Applications	ELISA, IF, IHC, WB
Immunogen	Synthesized peptide derived from human CLIP3
Immunogen Region	330-410 aa, Internal
Gene ID	25999
Gene Symbol	CLIP3
Dilution range	WB 1:500-1:2000IHC 1:100-1:300IF 1:200-1:1000ELISA 1:40000
Specificity	CLIP3 Polyclonal Antibody detects endogenous levels of CLIP3 protein.
Purification	The antibody was affinity-purified from rabbit antiserum by affinity-chromatography using epitope-specific immunogen.
Note	For Research Use Only (RUO).
Protein Name	CAP-Gly domain-containing linker protein 3 Cytoplasmic linker protein 170-related 59 kDa protein CLIP-170-related 59 kDa protein CLIPR-59
Molecular Weight	60 kDa
Clonality	Polyclonal
Conjugation	Unconjugated

Isotype	IgG
Formulation	Liquid in PBS containing 50% glycerol, 0.5% BSA and 0.02% sodium azide.
Concentration	1 mg/ml
Storage Instruction	Store at -20°C, and avoid repeat freeze-thaw cycles.
Database Links	HGNC:24314 OMIM:607382
Alternative Names	CAP-Gly domain-containing linker protein 3 Cytoplasmic linker protein 170-related 59 kDa protein CLIP-170-related 59 kDa protein CLIPR-59
Function	Functions as a cytoplasmic linker protein. Involved in TGN-endosome dynamics. May modulate the cellular compartmentalization of AKT kinase family and promote its cell membrane localization, thereby playing a role in glucose transport in adipocytes.
Sequence and Domain Family	Microtubule association is inhibited by the ANK repeats and the Golgi localization region (GoLD).
Cellular Localization	Cell membrane Cytoplasm Golgi apparatus, Golgi stack. Localized to Golgi stacks as well as on tubulovesicular elements juxtaposed to Golgi cisternae.
Post-translational Modifications	Palmitoylation by ZDHHC17 regulates association with the plasma membrane.

St John's Laboratory Ltd

F +44 (0)207 681 2580

T +44 (0)208 223 3081

W <http://www.stjohnslabs.com/>

E info@stjohnslabs.com