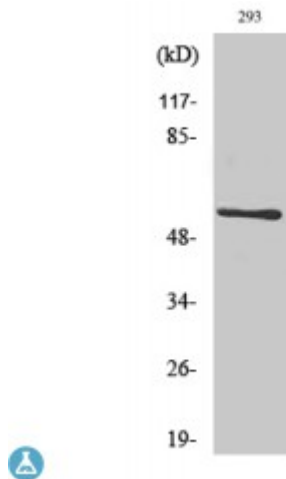


## Anti-CLK1 antibody



<b>Description</b>	Rabbit polyclonal to CLK1.
<b>Model</b>	STJ92336
<b>Host</b>	Rabbit
<b>Reactivity</b>	Human, Mouse
<b>Applications</b>	ELISA, IF, IHC, WB
<b>Immunogen</b>	Synthesized peptide derived from human CLK1
<b>Immunogen Region</b>	70-150 aa, Internal
<b>Gene ID</b>	<a href="#">1195</a>
<b>Gene Symbol</b>	<a href="#">CLK1</a>
<b>Dilution range</b>	WB 1:500-1:2000IHC 1:100-1:300IF 1:200-1:1000ELISA 1:20000
<b>Specificity</b>	CLK1 Polyclonal Antibody detects endogenous levels of CLK1 protein.
<b>Tissue Specificity</b>	Endothelial cells.
<b>Purification</b>	The antibody was affinity-purified from rabbit antiserum by affinity-chromatography using epitope-specific immunogen.
<b>Note</b>	For Research Use Only (RUO).
<b>Protein Name</b>	Dual specificity protein kinase CLK1 CDC-like kinase 1
<b>Molecular Weight</b>	57 kDa
<b>Clonality</b>	Polyclonal
<b>Conjugation</b>	Unconjugated

<b>Isotype</b>	IgG
<b>Formulation</b>	Liquid in PBS containing 50% glycerol, 0.5% BSA and 0.02% sodium azide.
<b>Concentration</b>	1 mg/ml
<b>Storage Instruction</b>	Store at -20°C, and avoid repeat freeze-thaw cycles.
<b>Database Links</b>	<a href="https://www.ncbi.nlm.nih.gov/condensedbook/condensedbook.cgi?acc=HGNC:2068OMIM:601951">HGNC:2068OMIM:601951</a>
<b>Alternative Names</b>	Dual specificity protein kinase CLK1 CDC-like kinase 1
<b>Function</b>	Dual specificity kinase acting on both serine/threonine and tyrosine-containing substrates. Phosphorylates serine- and arginine-rich (SR) proteins of the spliceosomal complex and may be a constituent of a network of regulatory mechanisms that enable SR proteins to control RNA splicing. Phosphorylates: SRSF1, SRSF3 and PTPN1. Regulates the alternative splicing of tissue factor (F3) pre-mRNA in endothelial cells and adenovirus E1A pre-mRNA.
<b>Cellular Localization</b>	Nucleus.
<b>Post-translational Modifications</b>	Autophosphorylates on all three types of residues.