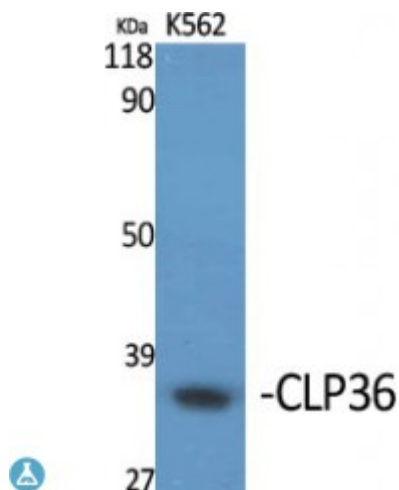


## Anti-CLP36 antibody



<b>Description</b>	Rabbit polyclonal to CLP36.
<b>Model</b>	STJ92344
<b>Host</b>	Rabbit
<b>Reactivity</b>	Human, Mouse, Rat
<b>Applications</b>	ELISA, IF, IHC, WB
<b>Immunogen</b>	Synthesized peptide derived from human CLP36
<b>Immunogen Region</b>	30-110 aa, Internal
<b>Gene ID</b>	<a href="#">9124</a>
<b>Gene Symbol</b>	<a href="#">PDLIM1</a>
<b>Dilution range</b>	WB 1:500-1:2000IHC 1:100-1:300IF 1:200-1:1000ELISA 1:5000
<b>Specificity</b>	CLP36 Polyclonal Antibody detects endogenous levels of CLP36 protein.
<b>Tissue Specificity</b>	Strongly expressed in the heart and skeletal muscle, moderately expressed in the spleen, small intestine, colon, placenta, and lung. A lower level expression is seen in liver, thymus, kidney, prostate and pancreas and is not found in the brain, testis, ovary, and peripheral blood leukocytes.
<b>Purification</b>	The antibody was affinity-purified from rabbit antiserum by affinity-chromatography using epitope-specific immunogen.
<b>Note</b>	For Research Use Only (RUO).
<b>Protein Name</b>	PDZ and LIM domain protein 1 C-terminal LIM domain protein 1 Elfin LIM domain protein CLP-36

<b>Molecular Weight</b>	36 kDa
<b>Clonality</b>	Polyclonal
<b>Conjugation</b>	Unconjugated
<b>Isotype</b>	IgG
<b>Formulation</b>	Liquid in PBS containing 50% glycerol, 0.5% BSA and 0.02% sodium azide.
<b>Concentration</b>	1 mg/ml
<b>Storage Instruction</b>	Store at -20°C, and avoid repeat freeze-thaw cycles.
<b>Database Links</b>	<a href="#">HGNC:2067OMIM:605900</a>
<b>Alternative Names</b>	PDZ and LIM domain protein 1 C-terminal LIM domain protein 1 Elfin LIM domain protein CLP-36
<b>Function</b>	Cytoskeletal protein that may act as an adapter that brings other proteins (like kinases) to the cytoskeleton.
<b>Cellular Localization</b>	Cytoplasm Cytoplasm, cytoskeleton. Associates with the actin stress fibers.

---

**St John's Laboratory Ltd**

**F** +44 (0)207 681 2580

**T** +44 (0)208 223 3081

**W** <http://www.stjohnslabs.com/>

**E** [info@stjohnslabs.com](mailto:info@stjohnslabs.com)