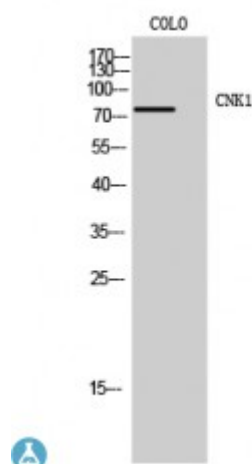


Anti-CNK1 antibody



Description	Rabbit polyclonal to CNK1.
Model	STJ92363
Host	Rabbit
Reactivity	Human, Mouse, Rat
Applications	ELISA, IF, IHC, WB
Immunogen	Synthesized peptide derived from human CNK1
Immunogen Region	460-540 aa, Internal
Gene ID	10256
Gene Symbol	CNKSR1
Dilution range	WB 1:500-1:2000IHC 1:100-1:300IF 1:200-1:1000ELISA 1:10000
Specificity	CNK1 Polyclonal Antibody detects endogenous levels of CNK1 protein.
Purification	The antibody was affinity-purified from rabbit antiserum by affinity-chromatography using epitope-specific immunogen.
Note	For Research Use Only (RUO).
Protein Name	Connector enhancer of kinase suppressor of ras 1 Connector enhancer of KSR 1 CNK homolog protein 1 CNK1 hCNK1 Connector enhancer of KSR-like
Molecular Weight	80 kDa
Clonality	Polyclonal
Conjugation	Unconjugated

Isotype	IgG
Formulation	Liquid in PBS containing 50% glycerol, 0.5% BSA and 0.02% sodium azide.
Concentration	1 mg/ml
Storage Instruction	Store at -20°C, and avoid repeat freeze-thaw cycles.
Database Links	HGNC:19700 OMIM:603272
Alternative Names	Connector enhancer of kinase suppressor of ras 1 Connector enhancer of KSR 1 CNK homolog protein 1 CNK1 hCNK1 Connector enhancer of KSR-like
Function	May function as an adapter protein or regulator of Ras signaling pathways.
Cellular Localization	Cytoplasm Membrane
Post-translational Modifications	Phosphorylated on tyrosine.

St John's Laboratory Ltd

F +44 (0)207 681 2580

T +44 (0)208 223 3081

W <http://www.stjohnslabs.com/>

E info@stjohnslabs.com