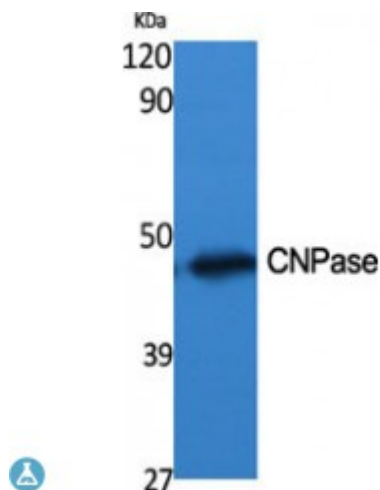


Anti-CNPase antibody



Description	Rabbit polyclonal to CNPase.
Model	STJ92368
Host	Rabbit
Reactivity	Human, Mouse, Rat
Applications	ELISA, IHC, WB
Immunogen	Synthesized peptide derived from human CNPase.
Immunogen Region	Internal
Gene ID	1267
Gene Symbol	CNP
Dilution range	WB 1:500-1:2000IHC 1:100-1:300ELISA 1:40000
Specificity	CNPase Polyclonal Antibody detects endogenous levels of CNPase protein.
Purification	The antibody was affinity-purified from rabbit antiserum by affinity-chromatography using epitope-specific immunogen.
Note	For Research Use Only (RUO).
Protein Name	2',3'-cyclic-nucleotide 3'-phosphodiesterase CNP CNPase
Molecular Weight	47 kDa
Clonality	Polyclonal
Conjugation	Unconjugated
Isotype	IgG

Formulation	Liquid in PBS containing 50% glycerol, 0.5% BSA and 0.02% sodium azide.
Concentration	1 mg/ml
Storage Instruction	Store at -20°C, and avoid repeat freeze-thaw cycles.
Database Links	HGNC:2158OMIM:123830
Alternative Names	2',3'-cyclic-nucleotide 3'-phosphodiesterase CNP CNPase
Function	May participate in RNA metabolism in the myelinating cell, CNP is the third most abundant protein in central nervous system myelin.
Cellular Localization	Membrane. Lipid-anchor. Melanosome. Firmly bound to membrane structures of brain white matter. Identified by mass spectrometry in melanosome fractions from stage I to stage IV.

St John's Laboratory Ltd

F +44 (0)207 681 2580

T +44 (0)208 223 3081

W <http://www.stjohnslabs.com/>

E info@stjohnslabs.com