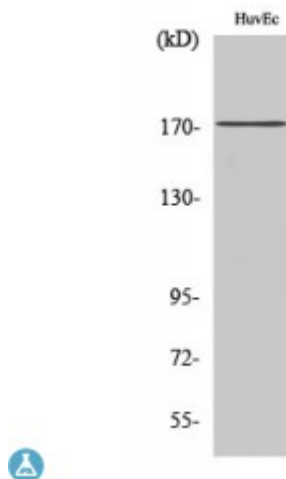


Anti-COL11A2 antibody



Description	Rabbit polyclonal to COL11A2.
Model	STJ92374
Host	Rabbit
Reactivity	Human, Mouse
Applications	ELISA, IHC, WB
Immunogen	Synthesized peptide derived from human COL11A2
Immunogen Region	1180-1260 aa, C-terminal
Gene ID	1302
Gene Symbol	COL11A2
Dilution range	WB 1:500-1:2000IHC 1:100-1:300ELISA 1:20000
Specificity	COL11A2 Polyclonal Antibody detects endogenous levels of COL11A2 protein.
Purification	The antibody was affinity-purified from rabbit antiserum by affinity-chromatography using epitope-specific immunogen.
Note	For Research Use Only (RUO).
Protein Name	Collagen alpha-2 XI chain
Molecular Weight	171 kDa
Clonality	Polyclonal
Conjugation	Unconjugated

Isotype	IgG
Formulation	Liquid in PBS containing 50% glycerol, 0.5% BSA and 0.02% sodium azide.
Concentration	1 mg/ml
Storage Instruction	Store at -20°C, and avoid repeat freeze-thaw cycles.
Database Links	HGNC:21870MIM:120290
Alternative Names	Collagen alpha-2 XI chain
Function	May play an important role in fibrillogenesis by controlling lateral growth of collagen II fibrils.
Sequence and Domain Family	The C-terminal propeptide, also known as COLFI domain, have crucial roles in tissue growth and repair by controlling both the intracellular assembly of procollagen molecules and the extracellular assembly of collagen fibrils. It binds a calcium ion which is essential for its function .
Cellular Localization	Secreted, extracellular space, extracellular matrix
Post-translational Modifications	Prolines at the third position of the tripeptide repeating unit (G-X-Y) are hydroxylated in some or all of the chains.; A disulfide-bonded peptide called proline/arginine-rich protein or PARP is released from the N-terminus during extracellular processing and is subsequently retained in the cartilage matrix from which it can be isolated in significant amounts.

St John's Laboratory Ltd

F +44 (0)207 681 2580
T +44 (0)208 223 3081

W <http://www.stjohnslabs.com/>
E info@stjohnslabs.com