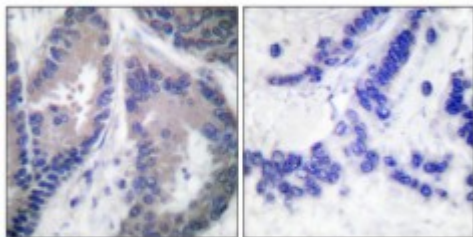


Anti-COL18A1 antibody



Description	Rabbit polyclonal to COL18A1.
Model	STJ92380
Host	Rabbit
Reactivity	Human, Mouse
Applications	ELISA, IHC
Immunogen	Synthesized peptide derived from human COL18A1
Immunogen Region	1270-1350 aa, C-terminal
Gene ID	80781
Gene Symbol	COL18A1
Dilution range	IHC 1:100-1:300ELISA 1:20000
Specificity	COL18A1 Polyclonal Antibody detects endogenous levels of COL18A1 protein.
Tissue Specificity	Present in multiple organs with highest levels in liver, lung and kidney.
Purification	The antibody was affinity-purified from rabbit antiserum by affinity-chromatography using epitope-specific immunogen.
Note	For Research Use Only (RUO).
Protein Name	Collagen alpha-1 XVIII chain Endostatin Non-collagenous domain 1 NC1
Molecular Weight	153.827 kDa
Clonality	Polyclonal

Conjugation	Unconjugated
Isotype	IgG
Formulation	Liquid in PBS containing 50% glycerol, 0.5% BSA and 0.02% sodium azide.
Concentration	1 mg/ml
Storage Instruction	Store at -20°C, and avoid repeat freeze-thaw cycles.
Database Links	HGNC:2195OMIM:120328
Alternative Names	Collagen alpha-1 XVIII chain Endostatin Non-collagenous domain 1 NC1
Function	COLA18A probably plays a major role in determining the retinal structure as well as in the closure of the neural tube.; Endostatin potently inhibits endothelial cell proliferation and angiogenesis. May inhibit angiogenesis by binding to the heparan sulfate proteoglycans involved in growth factor signaling.
Cellular Localization	Secreted, extracellular space, extracellular matrix
Post-translational Modifications	Prolines at the third position of the tripeptide repeating unit (G-X-Y) of the triple-helical regions are hydroxylated.