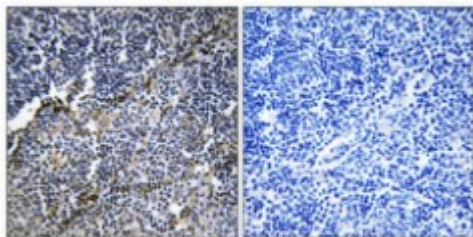


Anti-COL19A1 antibody



Description	Rabbit polyclonal to COL19A1.
Model	STJ92382
Host	Rabbit
Reactivity	Human
Applications	ELISA, IF, IHC, WB
Immunogen	Synthesized peptide derived from human COL19A1
Immunogen Region	390-470 aa, Internal
Gene ID	1310
Gene Symbol	COL19A1
Dilution range	WB 1:500-1:2000IHC 1:100-1:300IF 1:200-1:1000ELISA 1:10000
Specificity	COL19A1 Polyclonal Antibody detects endogenous levels of COL19A1 protein.
Tissue Specificity	Localized to vascular, neuronal, mesenchymal, and some epithelial basement membrane zones in umbilical cord.
Purification	The antibody was affinity-purified from rabbit antiserum by affinity-chromatography using epitope-specific immunogen.
Note	For Research Use Only (RUO).
Protein Name	Collagen alpha-1 XIX chain Collagen alpha-1 Y chain
Molecular Weight	120 kDa
Clonality	Polyclonal

Conjugation	Unconjugated
Isotype	IgG
Formulation	Liquid in PBS containing 50% glycerol, 0.5% BSA and 0.02% sodium azide.
Concentration	1 mg/ml
Storage Instruction	Store at -20°C, and avoid repeat freeze-thaw cycles.
Database Links	HGNC:2196OMIM:120165
Alternative Names	Collagen alpha-1 XIX chain Collagen alpha-1 Y chain
Function	May act as a cross-bridge between fibrils and other extracellular matrix molecules. Involved in skeletal myogenesis in the developing esophagus. May play a role in organization of the pericellular matrix or the sphinteric smooth muscle.
Sequence and Domain Family	The numerous interruptions in the triple helix may make this molecule either elastic or flexible.
Cellular Localization	Secreted, extracellular space, extracellular matrix
Post-translational Modifications	Prolines at the third position of the tripeptide repeating unit (G-X-Y) are hydroxylated in some or all of the chains.

St John's Laboratory Ltd

F +44 (0)207 681 2580

T +44 (0)208 223 3081

W <http://www.stjohnslabs.com/>

E info@stjohnslabs.com