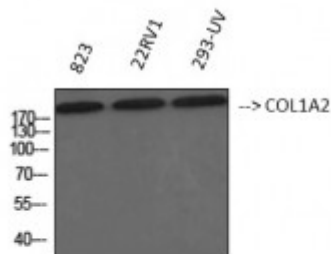


## Anti-COL1A2 antibody



Western Blot (WB) analysis of 1. 823 2. 22RV1 3. 293-UV using COL1A2 Polyclonal Antibody. (STJ92383)



### Description

COL1A2 is a protein encoded by the COL1A2 gene which is approximately 129,3 kDa. COL1A2 is secreted into the extracellular space. It is involved in collagen chain trimerization, the integrin pathway, ERK signalling and focal adhesion. It is a pro-alpha-2 chain of type I collagen whose triple helix comprises two alpha-1 chains and one alpha-2 chain. COL1A2 is expressed in tendons, ligaments and bones. Mutations in the COL1A2 gene may result in Ehlers-Danlos syndrome and osteogenesis imperfecta. STJ92383 was affinity-purified from rabbit antiserum by affinity-chromatography using epitope-specific immunogen. This polyclonal antibody detects endogenous levels of COL1A2 protein.

<b>Model</b>	STJ92383
<b>Host</b>	Rabbit
<b>Reactivity</b>	Human, Mouse, Rat
<b>Applications</b>	ELISA, IF, IHC
<b>Immunogen</b>	Synthesized peptide derived from human COL1A2
<b>Immunogen Region</b>	1-80 aa, N-terminal
<b>Gene ID</b>	<a href="#">1278</a>
<b>Gene Symbol</b>	<a href="#">COL1A2</a>
<b>Dilution range</b>	IHC 1:100-1:300IF 1:200-1:1000ELISA 1:10000
<b>Specificity</b>	COL1A2 Polyclonal Antibody detects endogenous levels of COL1A2 protein.
<b>Tissue Specificity</b>	Forms the fibrils of tendon, ligaments and bones. In bones the fibrils are mineralized with calcium hydroxyapatite.

<b>Purification</b>	The antibody was affinity-purified from rabbit antiserum by affinity-chromatography using epitope-specific immunogen.
<b>Note</b>	For Research Use Only (RUO).
<b>Protein Name</b>	Collagen alpha-2 I chain Alpha-2 type I collagen
<b>Molecular Weight</b>	92 kDa
<b>Clonality</b>	Polyclonal
<b>Conjugation</b>	Unconjugated
<b>Isotype</b>	IgG
<b>Formulation</b>	Liquid in PBS containing 50% glycerol, 0.5% BSA and 0.02% sodium azide.
<b>Concentration</b>	1 mg/ml
<b>Storage Instruction</b>	Store at -20°C, and avoid repeat freeze-thaw cycles.
<b>Database Links</b>	<a href="#">HGNC:2198OMIM:120160</a>
<b>Alternative Names</b>	Collagen alpha-2 I chain Alpha-2 type I collagen
<b>Function</b>	Type I collagen is a member of group I collagen (fibrillar forming collagen).
<b>Sequence and Domain Family</b>	The C-terminal propeptide, also known as COLFI domain, have crucial roles in tissue growth and repair by controlling both the intracellular assembly of procollagen molecules and the extracellular assembly of collagen fibrils. It binds a calcium ion which is essential for its function.
<b>Cellular Localization</b>	Secreted, extracellular space, extracellular matrix
<b>Post-translational Modifications</b>	Prolines at the third position of the tripeptide repeating unit (G-X-Y) are hydroxylated in some or all of the chains.

---

**St John's Laboratory Ltd**

**F** +44 (0)207 681 2580

**T** +44 (0)208 223 3081

**W** <http://www.stjohnslabs.com/>

**E** [info@stjohnslabs.com](mailto:info@stjohnslabs.com)